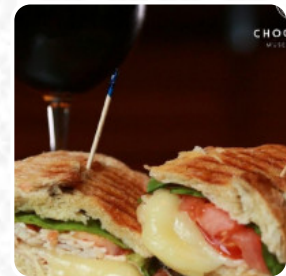




Chocolate Museum Cafe Menu

<https://menulist.menu>

11701 International Dr Suite 400, Orlando, FL 32821, United States
(+1)4077784871 - <https://www.wocorlando.com/>



Here you can find the menu of Chocolate Museum Cafe in Orlando. At the moment, there are **17** dishes and drinks on the card. You can inquire about seasonal or weekly deals via phone. What [User](#) likes about Chocolate Museum Cafe:

this place was great, we had so much fun in the chocolate sculpture museum and the taste tests. the history of the chocolate tour was also quite funny and informatiw, and our guide was really good. my favorite part, though we made the hand chocolate. I had to try so hard not to run out with 50 chocolates. my favorite were the exotic fruits (passion fruit), dark chocolate, lavender and honey and wrench with white choc... [read more](#). What [User](#)

doesn't like about Chocolate Museum Cafe:

We booked the fondue and museum tour. The tour wasn 't bad, it was only \$8 9 per person and included an overview of the history of chocolate, chocolate sculptures, and some chocolate bar tasting. It 's not really a 'museum ' they 've just created some nice decorations to represent the history of chocolate. It 's kinda interesting if you 're looking to fill time while in Orlando, but nothing overly special. The fondue... [read more](#). If you're desiring some hot South American gastronomy, you're in the right place: tasty menus, prepared with fish, sea creatures, and meat, but also corn, beans, and potatoes are on the menu, and you can enjoy here tasty American meals like Burger or Barbecue. We offer not only sweet pieces, cakes and simple snacks, but also *cold and hot drinks*, here they serve a **appetizing brunch** in the morning.

Chocolate Museum Cafe Menu



Salads

CAPRESE

Little things

CROISSANT

Sweets & Desserts

CHOCOLATE CROISSANT

Slushes

LIME

Hot Drink

HOT CHOCOLATE

Drinks

DRINKS

Coffee

ICED MOCHA

MOCHA

COFFEE

These types of dishes are being served

DESSERTS

ICE CREAM

PANINI

Ingredients Used

FRUIT

MANGO

PASSION FRUIT

HONEY

CHOCOLATE

Chocolate Museum Cafe Menu



Chocolate Museum Cafe

11701 International Dr Suite 400,
Orlando, FL 32821, United States

Opening Hours:

Thursday 12:00-18:00

Friday 12:00-18:00

Saturday 12:00-18:00

Sunday 12:00-18:00

Monday 12:00-18:00

Tuesday 12:00-18:00

Wednesday 12:00-18:00

Made with menulist.menu

 gallery image

