

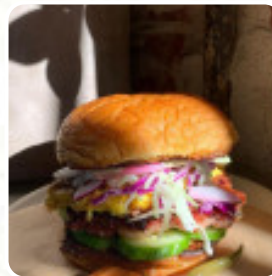


Highland Park Brewery Menu

<https://menulist.menu>

1220 N Spring St, Los Angeles, California, USA, 90012, United States

+12138789017 - <http://hpb.la/>



Here you can find the [menu](#) of Highland Park Brewery in Los Angeles. At the moment, there are 6 menus and drinks on the card. You can inquire about changing offers via phone. What [User](#) likes about Highland Park Brewery:

Great place with a wide range of craft beer and other drinks. I had a few IPAs and they were pretty good, and tried a few of the other drinks (can not remember) and they were also interesting and delicious. We have a big bezel and wing, and both were very good. If we had tried the Oktoberfest menu. The service was top notch and they nail the classic craft brewery Vibe without being too splashy or rough around the edge... [read more](#). The premises in the restaurant are wheelchair accessible and can also be used with a wheelchair or physical disabilities. What [User](#) doesn't like about Highland Park Brewery:

Good food and beer also seemed good, but the line was quick out of the door, serving only 2-3 people, not standing in 20 minutes line to try a second. You could also do better with flying control inside. It's popular and it seems to be a reason, but I have no idea why they can't add a few more stations and pourers that would help them sell more beer! [read more](#). If you're desiring some spicy South American cuisine, you've come to the right place: delicious dishes, prepared with fish, seafood, and meat, though corn, beans, and potatoes are also in the menu, For a snack in between, the tasty **sandwiches**, healthy salads, and other snacks are suitable. Moreover, there are tasty American dishes, such as **burgers and grilled meat**.

Highland Park Brewery Menu



Alcoholic Drinks

BEER

Starters & Salads

FRIES

Lamm & Hähnchen

SWEET AND SOUR

Main

PULLED PORK

French Fries

TATER TOTS

Hauptgerichte - Chicken

FRIED CHICKEN

Drinks

DRINKS

Double Down

TOTS

Neighborhood Burgers

THE CLASSIC

Restaurant Category

GASTROPUB

Sandwiches

CHICKEN SANDWICH

FRIED CHICKEN SANDWICH

*These types of dishes are
being served*

PANINI

BURGER

Ingredients Used

PORK MEAT

CHEESE

CHICKEN

Highland Park Brewery Menu



Highland Park Brewery

1220 N Spring St, Los Angeles,
California, USA, 90012, United
States

Opening Hours:

Monday 12:00 -22:00
Tuesday 12:00 -22:00
Wednesday 12:00 -22:00
Thursday 12:00 -24:00
Friday 12:00 -24:00
Saturday 12:00 -24:00
Sunday 12:00 -22:00

Made with menulist.menu

