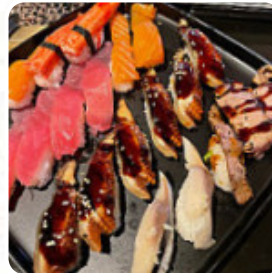
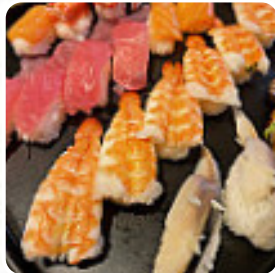




E-gyu Revolving Sushi Bbq Menu

<https://menulist.menu>

5979 Buford Hwy NE St A2, 30340, Atlanta, US, United States
(+1)4703958982 - <https://e-gyu.com/>



[The Menu](#) of *E-gyu Revolving Sushi Bbq* from Atlanta contains about **17** different dishes and drinks. On average, you pay for a dish / drink about \$8.1. What [User](#) likes about E-gyu Revolving Sushi Bbq: that was a very funny experience. revolving sushi and everything they can eat. there are other things they can order; some are additional costs, but why would they want that? there are enough to eat to enjoy and cook some of them when that is what they want. [read more](#). What [User](#) doesn't like about E-gyu Revolving [Sushi](#) Bbq: I mean the bbq side was good, but last night we got the all you can eat sushi and Korean bbq \$39.99 a person. Not one roll of [sushi](#) came around for the whole hour we were there. We were expecting sushi, the only rolls on the menu were \$3 bucks additional. All that was on the conveyor was kimchi and a few other vegetables, we really had a taste for [sushi](#) and it was a BiG let down. The atmosphere was good. We would go... [read more](#). At E-gyu Revolving [Sushi](#) Bbq in Atlanta, juicy meat is freshly prepared on an open flame and garnished with fine sides, Especially scrumptious are also the [Sushi](#) and delicacies like Inside-Out from this restaurant. In Korea, Korean menus such as Kimchi, Bap and Jjigae are considered traditional and have a special place on the menu card and the tables of the guests, and **easily digestible Japanese meals** are being made with lots of freshly harvested vegetables, fish and meat.

E-gyu Revolving Sushi Bbq Menu



Salads

SEAWEED SALAD \$6.0

10 most popular

CALI ROLL \$3.5

Main courses

SUSHI

Drinks

SAKE

Asian specialties

EDAMAME \$6.0

Sushi Roll or Hand Roll

SHRIMP TEMPURA ROLL \$4.5

Restaurant Category

BBQ SAUCE

These types of dishes are being served

TUNA STEAK

Nigiri Sushi

TUNA SUSHI \$4.0

SALMON SUSHI \$4.0

Fried rice

BEEF FRIED RICE \$12.0

SHRIMP FRIED RICE \$15.0

Bento

BEEF STEAK AND ROLL BENTO \$12.0

SUSHI AND ROLL COMBO BENTO \$14.0

Ingredients Used



MEAT

VEGETABLES

KIMCHI

E-gyu Revolving Sushi Bbq Menu



E-gyu Revolving Sushi Bbq

5979 Buford Hwy NE St A2,
30340, Atlanta, US, United States

Opening Hours:
Tuesday 04:00 -22:00
Wednesday 04:00 -22:00
Thursday 04:00 -22:00
Friday 04:00 -23:00
Saturday 01:00 -23:00
Sunday 01:00 -22:00

Made with menulist.menu

