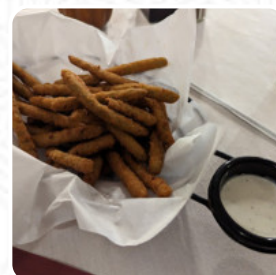
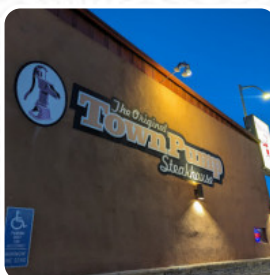
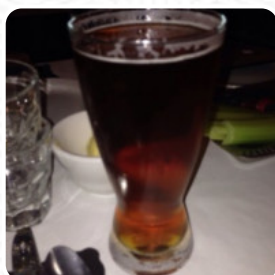
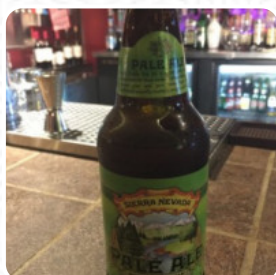




The Town Pump Menu

<https://menulist.menu>
200 W Main St, CA 92281, United States, Westmorland
+17603443663



As soon as we have **an overview of dishes and drinks** for The Town Pump from [Westmorland](#), we will publish it here. In the meantime, feel free to take a look at the meal plans in the surrounding area. Or help us by **uploading the menu here**. What [John Alvernaz](#) likes about The Town Pump:
Kym and I went Nov. 9 on my BIRTHDAY. It was our first time at the Town Pump. I'll tell ya they know how to feed people. The Steaks were cooked to perfection ... along with a big ole baked potatoe, some veggies. It was simply the best meal I've had at any restaurant in a long time. Oh yeah, I really did not have the room... but I had to have the Peach Gobbler. YES THE TOWN PUMP !!! [read more](#). What [Ben Strunk](#) doesn't like about The Town Pump:

This is the third time I have come here, and I ordered the same steak. The dry aged ribeye, medium rare and loaded mashed potatoes. This is the third different take on the cook. First time it was on the rare side, last time it was perfect, tonight it was a perfect medium well. The potatoes sometimes are loaded, sometimes just cheese. Tonight while my food was on the grill, I had very little to do but watch the grill... [read more](#).

The Town Pump Menu



Sandwiches

CALIFORNIA SANDWICH

Side dishes

MASHED POTATOES

Chicken

CHICKEN FRIED STEAK

Meat

STEAKHOUSE

South American Beef

NEW YORK STRIP

Ribs

PRIME RIB

Specialty Drinks

PEACH

Asador's Steaks

RIBEYE

Appetizers

CLAM CHOWDER

FRIED SHRIMP

*These types of dishes are
being served*

TUNA STEAK

BREAD

Ingredients Used

CHICKEN

SHRIMP

CHEESE

POTATOES

BEEF

The Town Pump Menu



The Town Pump

200 W Main St, CA 92281, United States, Westmorland

Opening Hours:

Tuesday 16:30-21:30
Wednesday 16:30-21:30
Thursday 16:30-21:30
Friday 16:30-21:30
Saturday 16:30-21:30
Sunday 16:30-21:30

Made with menulist.menu

 gallery image

