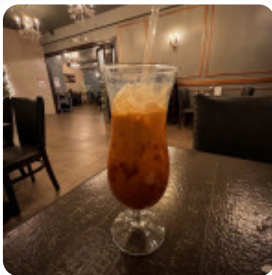


Thai Chic Bistro Menu

<https://menulist.menu>

1241 Broadway, Hewlett, United States

(+1)5165691705 - <https://thai-chic-bistro.business.site>



The place from Hewlett offers 17 different **dishes and drinks on [the menu](#)** at an average price of \$7.2. What [Karen Weinberg](#) likes about Thai Chic Bistro:

Parking: Parking lot isn't always available nor is street parking but there may be parking at the rear of the lot. Service: Take out Meal type: Dinner Price per person: \$10–20 [read more](#). The restaurant is accessible and can therefore also be used with a wheelchair or physical limitations, Depending on the weather conditions, you can also sit outside and have something. What [Steven K](#) doesn't like about Thai Chic Bistro:

If sitting for an hr on the toilet and having a bucket in front of u Bec it comes out of there to then this is ur place thanks guys for this wonderful experience never again Food: 2 [read more](#). Thai Chic Bistro from Hewlett prepares delightful menus, refined with the popular spices and (fish-)sauces of the *Thai cuisine*, along with plenty of freshly harvested vegetables, [seafood](#) and meat, Customers can enjoy the dishes from establishment through a **catering service** on-site or at the party. Furthermore, they proffer you delicious [seafood](#) meals.

Thai Chic Bistro Menu



Salads

PAPAYA SALAD \$9.0

Salad

THAI SALAD \$8.0

Side dishes

JASMINE RICE \$3.0

Asian specialties

EDAMAME \$6.0

Spezial-Nudeln

UDON

Fried Rice

FRIED RICE

Side Order

BROWN RICE \$3.5

Vegetarian Salad

LARB MUSHROOM SALAD \$11.0

Smaller Plates

CRISPY SPRING ROLLS \$6.0

Vegetarian (Salad)

CRISPY MOCK DUCK SALAD \$12.0

These types of dishes are being served

SALAD

Salad and Soup

TOM YUM SOUP \$7.0

TOM KHA SOUP \$7.0

Ingredients Used

MANGO

BROCCOLI

RICE

CHICKEN

Thai Chic Bistro Menu



Thai Chic Bistro

1241 Broadway, Hewlett, United States

Made with [menulist.menu](#)

Opening Hours:
Monday 11:30-15:30
Tuesday 11:30-15:30
Wednesday 11:30-15:30
Thursday 11:30-15:30
Friday 11:30-15:30
Saturday 11:30-15:30
Sunday 11:30-15:30

