

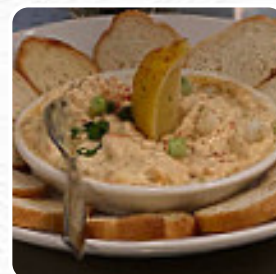
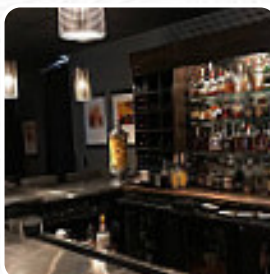
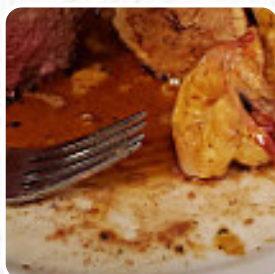


Ely's Menu

<https://menulist.menu>

115 West Jackson Street Suite EMS 39157, Ridgeland, United States

+16016056359 - <http://www.elysrestaurant.com/>



Here you can find the [menu](#) of Ely's in Ridgeland. At the moment, there are **17** courses and drinks on the food list. You can inquire about *changing offers* via phone. What [User](#) likes about Ely's:

Food was delicious only issue was the overcooked asparagus which they took back and off our ticket. The Blackfish was amazing everyone seemed to enjoy their steaks as well and my mother liked her scallops! They did go above and beyond in my opinion by calling us after to let us know our salads they had put in the fridge and were still in there and offered to run them down for us which was super nice! [read more](#). The restaurant and its rooms are wheelchair accessible and thus usable with a wheelchair or physical limitations. What [User](#) doesn't like about Ely's:

For our 5th anniversary. Elys even sent me an email to our upcoming anniversary. No one recognized it or asked if we would celebrate something special. Had to ask for water fillings several times. Food quality was decent. Appetizer was great. Salad good. The pages were great. The main course was shortages. The scallops, which used to be best in town, were not completely cooked. They replaced redfish for the blackfish... [read more](#). If you're looking for more variety than just eating and drinking, you'll find it in this sports bar. Enjoy large and small snacks and menus and watch live football, tennis or Formula 1 games, At the bar, you can unwind with a cool beer or other alcoholic and non-alcoholic drinks. Furthermore, they proffer you **delicious** [seafood](#) dishes.

Ely's Menu



Salads

SPINACH SALAD

Non alcoholic drinks

WATER

Main courses

CRAB

Sauces

HONEY MUSTARD

Meat

STEAKHOUSE

Tapas

EGGPLANT

Drinks

DRINKS

Vegetable Or Hand Roll

ASPARAGUS

These types of dishes are being served



STEAK

SALAD

APPETIZER

Ingredients Used

HONEY

SENF

SCALLOPS

TUNA

SPINAT

BEEF

Ely's Menu



Ely's

115 West Jackson Street Suite
EMS 39157, Ridgeland, United
States

Opening Hours:
Monday 16:00-18:00 16:30-20:30
Tuesday 16:00-18:00 16:30-20:30
Wednesday 16:00-18:00 16:30-20:30
Thursday 16:00-18:00 16:30-20:30
Friday 16:00-18:00 16:30-20:30
Saturday 16:00-18:00 16:30-20:30

Made with menulist.menu

