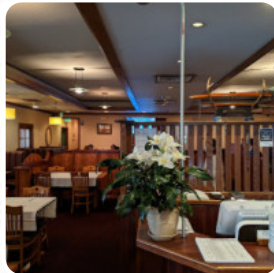
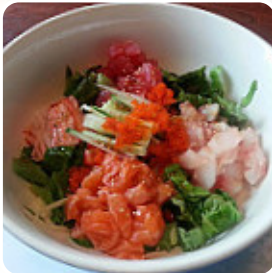




Ichiban Japanese Korean Menu

<https://menulist.menu>

530 Farmington Ave CT 06105, Hartford, United States
+18602365599 - <http://www.ichibanhartford.com/>



The menu of Ichiban Japanese Korean from Hartford includes **10** meals. On average, **meals or drinks on the [menu](#)** cost about \$12.3. The categories can be viewed on the menu below. What [User](#) likes about Ichiban Japanese Korean:

Nice staff, good food, cool atmosphere. Music was all over the place, but the restrooms were very clean. Our waiter was awesome, friendly, and gave us a great recommendation based on our input. I'm not much for Korean cuisine, but my wife is, and she absolutely loved our visit. [read more](#). At Ichiban Japanese Korean from Hartford you can *enjoy delicious [vegetarian](#) meals*, in which no animal meat or fish was used, and you can look forward to the scrumptious typical [seafood](#) cuisine. But the undisputed highlight of this establishment is the delicious [Sushi](#) such as [Nigiri](#) and [Inside-Out](#), On the menu there are also several Asian dishes.

Ichiban Japanese Korean Menu



Non alcoholic drinks

LEMON

Main courses

SUSHI

Beef dishes

BULGOGI

Crêpevariationen

SHRIMP TERIYAKI \$17.0

Appetizer

SLICED CODFISH \$7.0

Appetizer kalt

SUNOMONO \$9.0

Sonstiges

SASHIMI

Japanese specialties

MISO SOUP \$2.0

Soup and Salad

OSUI MONO SOU \$2.5

Specialty Entrees

BEEF BULGOGI \$22.0

Thai Style Salads

SQUID SALAD \$6.0

Appetizers

YAKI GYOZA

KALBI \$29.0

Ingredients Used

KIMCHI

SEAFOOD

These types of dishes are being served

SALMON TERIYAKI \$17.0

NOODLES

Ichiban Japanese Korean Menu



Ichiban Japanese Korean

530 Farmington AveCT 06105,
Hartford, United States

Opening Hours:
Wednesday 04:30 -22:00
Thursday 04:30 -22:00
Friday 04:30 -22:00
Saturday 04:30 -22:00
Sunday 04:30 -22:00
Monday 04:30 -22:00
Tuesday 04:30 -22:00

Made with menulist.menu

