

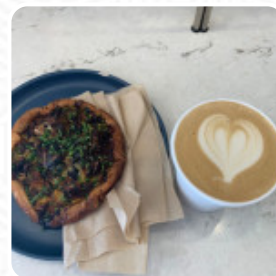
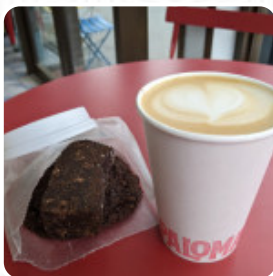


## ***Paloma Coffee Bakery Menu***

<https://menulist.menu>

Shop On The Corner, 772 Manhattan Ave, New York, United States Of America, Broad Channel

+18775851085 - <https://www.palomacoffeebakery.com/>



The restaurant from Broad Channel offers **10** different **meals and drinks** on [the menu](#) at an average \$6.7. What [Charlie Filson Dineen](#) likes about Paloma Coffee Bakery:

Great coffee and food! This is my favorite little corner to sit on and people watch solo when grabbing a coffee. Also a nice spot to sit outside and read a book. [read more](#). A visit to Paloma Coffee Bakery becomes even more rewarding due to the comprehensive selection of *coffee and tea specialties*.

# Paloma Coffee Bakery Menu



## Vegetarian

CAULIFLOWER

## Süßes

MUFFINS

## Pop Tarts

BLUEBERRY

## Hot drinks

TEA \$3.0

## something cold

COLD BREW LATTE \$5.0

## Hot Drink

HOT CHOCOLATE \$4.0

## Speciality Beverages

COLD BREW \$5.0

## Retail Coffee

BEANS FIRST FLIGHT SIGNATURE ESPRESSO BLEND \$17.0

BEANS RED 5 DICIEMBRE OAXACA, MEXICO \$17.0

## Drip Coffee

SUMMER SOLSTICE FILTER DATERRA ESTATES, BRAZIL \$4.0

A NEW HOPE AQUIARES ESTATE, COSTA RICA \$4.5

## Coffee

CAPPUCCINO \$4.0

ESPRESSO \$3.0

DOUBLE ESPRESSO

ICED LATTE

COFFEE

# *Paloma Coffee Bakery Menu*



## *Paloma Coffee Bakery*

Shop On The Corner, 772  
Manhattan Ave, New York, United  
States Of America, Broad  
Channel

**Opening Hours:**  
---

 gallery image