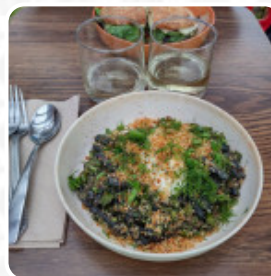




Sorbu Paninoteca Menu

<https://menulist.menu>

5010 Northeast 41st Avenue, Portland, 97211, United States Of America, Jennings Lodge
+19718956369 - <http://www.sorbupdx.com/>



A comprehensive menu of Sorbu Paninoteca from Jennings Lodge covering all 10 meals and drinks can be found here on the card. For *seasonal or weekly deals*, please get in touch via phone or use the contact details provided on the website. What [User](#) likes about Sorbu Paninoteca:

These are the best sandwiches I have ever eaten in my life. Mind blowing. I hate cole slaw, but this place put it on a sandwich and it was incredible. I'd drive across town through rush hour traffic for this food. [read more](#). The restaurant also offers the possibility to sit outside and have something in beautiful weather. If you want to eat something tasty quickly, Sorbu Paninoteca from Jennings Lodge offers **scrumptious sandwiches, small salads and other snacks**, as well as cold and hot beverages, You'll find delicious South American dishes also on the menu. Moreover, awaiting for you is typical Italian cuisine with tasty classics like pizza and pasta, and you can indulge in delicious American dishes like **Burger or Barbecue**.

Sorbu Paninoteca Menu



Non alcoholic drinks

KOMBUCHA

Alcoholic Drinks

BEER

Seafood

SHRIMP SALAD

Salad

COLE SLAW

Tapas

EGGPLANT

Veggie

VEGGIE SANDWICH

Water

SODA

Drinks

DRINKS

Ingredients Used

VEGETABLES

CHEESE

SHRIMP

***These types of dishes are
being served***

PANINI

BREAD

STEAK

SALAD

Sorbu Paninoteca Menu



Sorbu Paninoteca

5010 Northeast 41st Avenue,
Portland, 97211, United States Of
America, Jennings Lodge

Opening Hours:
Tuesday 04:00 -19:00
Wednesday 11:00 -19:00
Thursday 11:00 -19:00
Friday 11:00 -19:00
Saturday 11:00 -19:00

Made with menulist.menu

 gallery image

