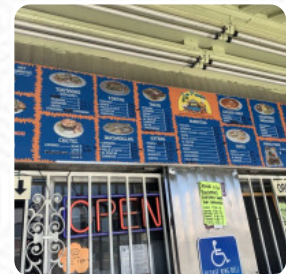
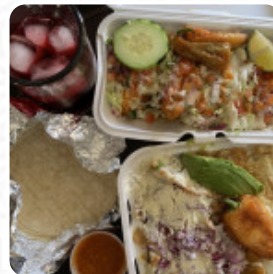
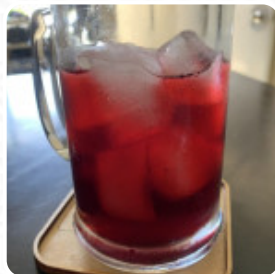




La Palapa Sinaloense Menu

<https://menulist.menu>

4060 E Olympic Blvd, 90023, Los Angeles, US, Kalkbaai iNingizimu Afrika, United States
(+1)3232648199



As soon as we have a **menu** for La Palapa Sinaloense from Kalkbaai iNingizimu Afrika, we will publish it here. In the meantime, feel free to take a look at the meal plans in the surrounding area. Or help us by [making available the meal plan here](#). What [User](#) likes about La Palapa Sinaloense:

This place is amazing, and worth every penny. The prices are a little high, but they load up your plate. The portions will fill you up, and have plenty of taste. Tuesday they have specials on fish tacos that are amazing. The only negative I have is the lack of parking. It's seating is also small, most people usually order to go. Seafood cocktail is good and includes avocado. The AI pastor torta came with fries. Again... [read more](#). When the weather is pleasant you can also eat outside. At La Palapa Sinaloense in Kalkbaai iNingizimu Afrika, there's a *hearty brunch* for breakfast where you can eat as much as you want enjoy, Many guests are also especially looking forward to the diverse, delicious Mexican cuisine. In addition, they offer you **flavorful seafood meals**.

La Palapa Sinaloense Menu



Salads

TACOS

Appetizers

SHRIMP COCKTAIL

Fish dishes

FISH TACOS

A la carte

TORTA

Starters & Salads

FRIES

Tacos

AL PASTOR

Main Course

CEVICHE

Mexican dishes

TACO

Beverages

JUICES

Seafood and Grill Tacos

FISH TACO

These types of dishes are being served

FISH

Restaurant Category

COCKTAIL

MEXICAN

Ingredients Used

SHRIMP

SEAFOOD

AVOCADO

La Palapa Sinaloense Menu



La Palapa Sinaloense

4060 E Olympic Blvd, 90023, Los Angeles, US, Kalkbaai iNingizimu Afrika, United States

Opening Hours:

Monday 10:00 -18:00
Tuesday 10:00 -18:00
Wednesday 10:00 -18:00
Thursday 10:00 -18:00
Friday 10:00 -18:00
Saturday 10:00 -17:00

Made with menulist.menu

 gallery image

