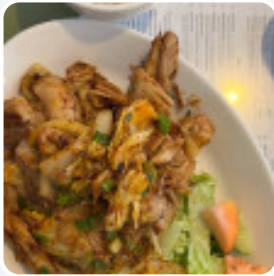




Phở Nam Menu

<https://menulist.menu>

725 Kapiolani Blvd STE C126, 96813, Honolulu, US, United States
+18085932009 - <http://pho-nam-honolulu.poi.place/>



Here you can find the [menu](#) of Phở Nam in Honolulu. At the moment, there are **16** dishes and drinks on the menu. You can inquire about **seasonal or weekly deals** via phone. What [Sam Keshvari](#) likes about Phở Nam: I don't usually rate a place 5 stars unless is exceptionally better than others of the same type. This place is clean and well ventilated. The Pho I ordered was amazingly good, with good amount of meat and noodles and the price is reasonable. The waitress was nice. Went on a Sunday afternoon and it wasn't crowded. [read more](#). What [Erica K](#) doesn't like about Phở Nam:

This was my first and last time here. I came here with my fiancé and we wanted to try a new vietnamese place. I looked on yelp and saw 4 stars and the pictures of food looked good so we decided to give it a try. We ordered summer rolls, spicy lemongrass chicken and spicy lemongrass shrimp. The portion size was on the small side. It was mostly fillers like cabbage and onions and little bit of protein. The chicken was... [read more](#). With *original Asian spices scrumptious* traditional dishes are prepared in the kitchen of Phở Nam in Honolulu, Besides, the inventive blend of different menus with new and partially adventurous ingredients is appreciated by the customers - a good case of Asian Fusion. It's precisely the freshness and lightness together with the typical spices that not only brings delectable menus to the table, but also puts the visitors into a pleasant holiday feeling for a short time.

Phở Nam Menu

Appetizers

SPRING ROLLS

Soups

HOT SOUR SOUP

Side dishes

MIXED VEGETABLES

Fingerfood

CALAMARES

Fried rice

THAI FRIED RICE

Fried Rice

FRIED RICE

*These types of dishes are
being served*



SOUP

PORK CHOPS

NOODLES

SALAD

Ingredients Used

VEGETABLES

RICE

BEEF

CHICKEN

PORK MEAT

MEAT

Phở Nam Menu



Phở Nam

725 Kapiolani Blvd STE C126,
96813, Honolulu, US, United
States

Opening Hours:

Monday 10:00 -20:30
Tuesday 10:00 -20:30
Wednesday 10:00 -20:30
Thursday 10:00 -20:30
Friday 10:00 -20:30
Saturday 11:00 -20:30
Sunday 12:00 -20:00

Made with menulist.menu

 gallery image

