

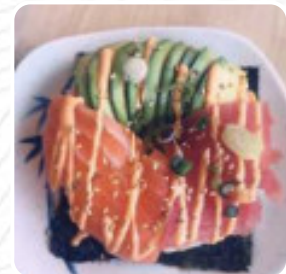
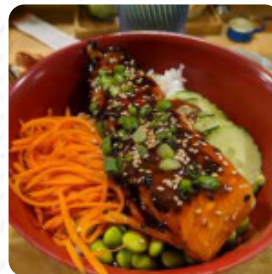


Wasabi Sushi Menu

<https://menulist.menu>

3448 NE Sandy Blvd, Portland I-97232-1974, United States

+15037197864



The restaurant from Portland offers 16 different **dishes and drinks** on [the menu](#) at an average \$8.4. What [Will](#) likes about Wasabi Sushi:

This is my favorite local Portland spot for [sushi](#). Always good, fresh quality sushi/rice and nice presentation as well! Try the ocean bowl or spider crunchy sushi roll! [read more](#). With a large selection of freshly harvested vegetables, fish and meat, the Wasabi Sushi from Portland prepares healthy, flavorful Japanese meals, Particularly the extraordinary fusions of various ingredients offer the guests a remarkable taste experience of this extraordinary *fusion cuisine*. The **Asian fusion cuisine** is also an important part of Wasabi [Sushi](#). Anyone who finds the everyday and generally known meals too boring should approach with a willingness to experiment and try some unexpected combination of ingredients taste, Particularly tasty are also the Maki and specialties like Inside-Out from this place.

Wasabi Sushi Menu



Sandwiches & Hot Paninis

BURRITO

Mains

ORANGE CHICKEN BOWL \$10.0

Noodle

RAMEN

Uramaki Inside Out

TREASURE ISLAND ROLL \$10.0

Sushi

ALASKAN ROLL \$10.0

Katsu Dinner

SHRIMP KATSU \$7.0

Sushi Rice Bowls

GENERAL KAZ'S CHICKEN BOWL \$10.0

Chef's Selection Rolls

SAMURAI DRAGON \$9.0

Sushi B-rittos

NINJA KICK \$9.0

These types of dishes are being served

SPICY TUNA \$8.0

Main courses

SUSHI

CALAMARI

Sushi Donuts

CRAB FILLING WITH TUNA AND SALMON ON TOP \$5.0

TUNA FILLING WITH TUNA AND SALMON ON TOP \$6.0

Ingredients Used

RICE

TUNA

Wasabi Sushi Menu



Wasabi Sushi

3448 NE Sandy Blvd, Portland I-
97232-1974, United States

Opening Hours:

Made with menulist.menu

