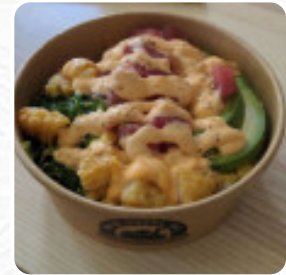
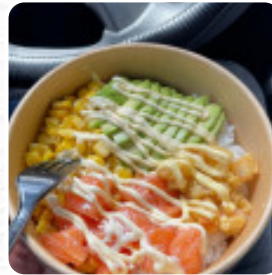




New Sushi Menu

<https://menulist.menu>

66 Brighton Ave, Boston I-02134-2101, United States
(+1)6172088747 - <https://www.kyoajialstonma.com/>



The place from Boston offers **16 different menus and drinks on [the card](#)** at an average price of \$7.3. What [Leila B](#) likes about New [Sushi](#):

Overpriced but so good. Anytime i need a comfort food i shoot over to here. Unfortunately if you ask someone to keep something out of the order they dont do it, so if you're allergic to anything i would be careful. [read more](#).

The rooms in the restaurant are wheelchair accessible and can also be used with a wheelchair or physiological disabilities, and there is free WLAN. For you, New [Sushi](#) from Boston prepares *scrumptious [sushi](#)* (e.g., *Maki and Te-Maki*), in numerous other versions, with fresh ingredients like fish, vegetables and meat, Customers can enjoy the dishes from restaurant through a [catering service](#) on-site or at the festival.

New Sushi Menu



Salads

SALAD BOWL \$11.0

Non alcoholic drinks

BOTTLED WATER \$1.5

Sandwiches & Hot Paninis

BURRITO

Main courses

SUSHI

Extras

SUSHI RICE \$2.0

Side dishes

STEAM RICE \$2.0

Sushi Nigiri

IKURA

Starters

POKÉ BOWL \$11.0

Sonstiges

SASHIMI

Sushi Burrito

SUSHI BURRITO \$11.0

Water

SODA \$2.5

Signature Burritos

HOUSE RAINBOW \$11.0

Heroes O Paninis

HOUSE GRILLED CHICKEN \$10.5

Signature Sushi Burritos

HOUSE SPICY CRAWFISH \$10.5

Ingredients Used

TUNA

These types of dishes are being served

FISH

New Sushi Menu



New Sushi

66 Brighton Ave, Boston I-02134-2101, United States

Opening Hours:

Monday 11:00 -21:30
Tuesday 11:00 -21:30
Wednesday 11:00 -21:30
Thursday 11:00 -21:30
Friday 11:00 -22:00
Saturday 11:30 -22:00
Sunday 11:30 -22:00

Made with menulist.menu

 gallery image

