

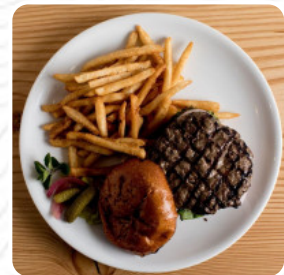
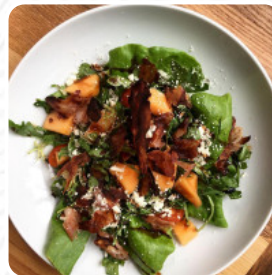


Farestart Pactower Cafe Menu

<https://menulist.menu>

1200 12th Ave S, Seattle, United States

+12067871596



The **menu of Farestart Pactower Cafe** from Seattle includes 16 meals. On average, meals or drinks on the menu cost about \$5.0. The categories can be viewed on the menu below. What [User](#) likes about Farestart Pactower Cafe:

Great place for lunch on the go if you're attending a program or meeting at Pacific Tower. The selection isn't huge, but they do what they do really well. I'm a big fan of their sandwiches; in my experience, FareStart sandwiches are fairly boldly flavored, which isn't always true of grab-and-go lunch counters. (I've come to expect a certain inoffensive blandness from any sandwich pulled out of a cooler, but the pesto... [read more](#). If you're craving some zesty South American cuisine, you've come to the right place: exquisite dishes, roasted with fish, seafood, and meat, though corn, beans, and potatoes are also on the menu, For a snack, you can also have the tasty **sandwiches**, small salads and other snacks. Apart from small snacks, sweet pieces and cakes, there are also cold and hot drinks, and you can indulge in tasty American dishes like *Burger or Barbecue*.

Farestart Pactower Cafe Menu



Sandwiches

SPECIAL TRI-TIP \$8.4

Side dishes

COUSCOUS SALAD \$3.7

Chips

KETTLE CHIPS \$2.0

Beverages

ITALIAN SODA \$2.7

Hot drinks

HOT TEA \$2.0

Soups and Salads

BEET AND GOAT CHEESE \$7.7

Popular Items

SOUTHWEST BOWL \$6.0

For Yourself

FARMERS BOWL \$6.0

Restaurant Category

ITALIAN

Salads

APPLE WALNUT CHICKEN \$8.0

SPINACH CAPRESE SALAD \$4.0

These types of dishes are being served

SALAD

PANINI

Ingredients Used



MEAT

CHEESE

PESTO

Farestart Pactower Cafe Menu



Farestart Pactower Cafe

1200 12th Ave S, Seattle, United States

Opening Hours:

Made with menulist.menu

