



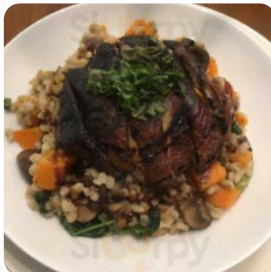
Rose And Compass Menu

<https://menulist.menu>

8235 NE Airport Way, Portland, United States

+15032812500 -

http://www.starwoodhotels.com/sheraton/property/overview/index.html?propertyID=881&EM=VTY_SI_881_PORTLAND_OVERVIEW



A complete [menu](#) of **Rose And Compass** from Portland covering all 16 meals and drinks can be found here on the card. For seasonal or weekly deals, please get in touch via phone or use the contact details provided on the website. What [User](#) likes about Rose And Compass:

I had a really great experience, my two sisters, and I wanted to come together and get up, this place was perfect. it was more open area, service was absolutely great, we had the lunch menu, which was great, I wish we had gone a little later to try the dinner menu. [read more](#). What [User](#) doesn't like about Rose And Compass:

As someone who has had to fly in and out of portland for years, the rose and compass has always been the perfect stop either on your way out to a flight or on your way back into portland! I have eaten here maybe a dozen times and it has never disappointed, with great food and spectacular service. the waiters are timely and very helpful, especially Rhonda [read more](#). Rose And Compass from Portland is a good option for a bar if you want to have a beer after work and hang out with friends, and you have the opportunity to try scrumptious American menus like *Burger or Barbecue*. Even **South American** fresh seafood, meat, as well as beans and rice are cooked here, The barbecued food is freshly prepared here on an open flame.

Rose And Compass Menu



Salads

RUCOLA SALAD

Alcoholic Drinks

MARSALA

10 most popular

CHICKEN MARSALA

Fish dishes

FISH AND CHIPS

Side dishes

MASHED POTATOES

Starters & Salads

POTATOE CHIPS

Happy Hour - Classic Cocktails

BLOODY MARY

Drinks

DRINKS

Biscuits and Cookies

CHEESECAKE

Restaurant Category

DESSERT

These types of dishes are being served

SALAD

FISH

Ingredients Used

STRAWBERRY

ARUGULA

CHICKEN

POTATOES

Rose And Compass Menu



Rose And Compass

8235 NE Airport Way, Portland,
United States

Opening Hours:

Monday 05:00-01:00
Tuesday 05:00-01:00
Wednesday 05:00-01:00
Thursday 05:00-01:00
Friday 05:00-01:00
Saturday 05:00-01:00
Sunday 05:00-01:00

Made with menulist.menu

