

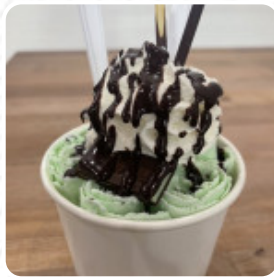


## Rollin' Creamery Menu

<https://menuweb.menu>

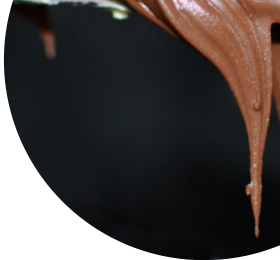
17908 1/2 Magnolia St, Fountain Valley I-92708-5039, United States

**+17142037021**



A complete [menu](#) of Rollin Creamery from [Fountain Valley](#) featuring all 14 meals and drinks can be found here on the menu.

# Rollin' Creamery Menu



## Thai

THAI TEA

## Mexican Dishes

TACO

## Toppings

TOPPINGS

## Hot Drinks

TEA

## Refreshments

20 OZ. STRAWBERRY LEMONADE \$3.5

## Delightful Ice Cream

BLACK SESAME ICE CREAM \$7.5

## These Types Of Dishes Are Being Served

ICE CREAM

## Ice Cream\*

ANDES MINT CHOCOLATE CHIP ICE CREAM \$7.5

CAFE SUA DA ICE CREAM \$7.5

MATCHA' S-N-CREME ICE CRAM \$7.5

## Drink

20 OZ THAI TEA \$4.0

20 OZ. LYCHEE LEMONADE \$3.5

20 OZ. MANGO LEMONADE \$3.5

20 OZ. WATERMELON LEMONADE \$3.5

## Dessert



CHEESECAKE

COOKIES

COOKIE

STRAWBERRY CHEESECAKE

FUDGE BROWNIE ICE CREAM \$7.5

## Ingredients Used

MINT

FRUIT

NUTELLA

CHOCOLATE

COCONUT

# Rollin' Creamery Menu

---

## Rollin' Creamery

17908 1/2 Magnolia St, Fountain  
Valley I-92708-5039, United  
States

### Opening Hours:

Monday 02:00 -22:00  
Tuesday 02:00 -22:00  
Wednesday 02:00 -22:00  
Thursday 02:00 -22:00  
Friday 01:00 -23:00  
Saturday 01:00 -23:00  
Sunday 01:00 -22:00

Made with [menuweb.menu](https://menuweb.menu)

