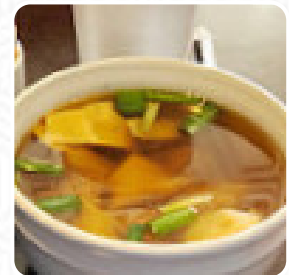




## *Asian Taste Lee Menu*

<https://menulist.menu>

5420 New Jesup Hwy, Brunswick I-31523-1137, United States  
+19122619433



On this site, you can find the [complete menu](#) of Asian Taste Lee from Brunswick. Currently, there are 16 meals and drinks up for grabs. For *changing offers*, please contact the owner of the restaurant directly. You can also contact them through their website. What [Jeremie D'Amore](#) likes about Asian Taste Lee: Asian Taste Lee is hands down our favorite Chinese restaurant in Glynn County. Their food is always fresh and never greasy. We hope they are around for a long time! [read more](#). In Brunswick, traditional dishes are prepared in the kitchen of Asian Taste Lee with original **Asian spices fine**. Many guests are particularly looking forward to the **versatile, delicious Chinese cuisine**. The Asian fusion cuisine is likewise an important part of Asian Taste Lee. Anyone who finds the everyday and generally known meals too boring should approach with a willingness to experiment and try some exciting combination of ingredients enjoy.

# *Asian Taste Lee Menu*



## *Main courses*

CRAB

## *Appetizer*

CRAB RANGOON

## *Specialties*

TERIYAKI CHICKEN

## *Vegetables*

EGG ROLLS

## *Fried Rice & Noodles*

LO MEIN

## *Saucen*

KNOBLAUCHSAUCE

*These types of dishes are  
being served*

SOUP

## *Ingredients Used*



MEAT

VEGETABLES

CHICKEN

EGG

BROCCOLI

TERIYAKI

BEEF

GARLIC

RICE

# *Asian Taste Lee Menu*



## *Asian Taste Lee*

5420 New Jesup Hwy, Brunswick  
I-31523-1137, United States

### **Opening Hours:**

Tuesday 00:00-20:30  
Wednesday 00:00-20:30  
Thursday 00:00-20:30  
Friday 00:00-20:30  
Saturday 00:00-20:30  
Sunday 00:00-20:30

Made with [menulist.menu](https://menulist.menu)

