

# P.B.'s TAKEOUT

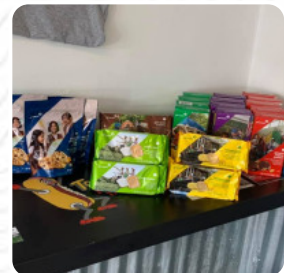
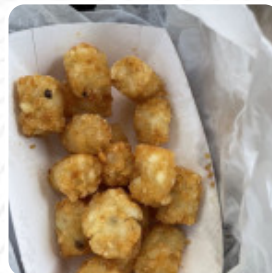


## P.b. 's Takeout Menu

<https://menuweb.menu>

1412 S Hawthorne Rd, Winston-Salem, NC 27103, United States

+13367488990



A complete [menu](https://menuweb.menu) of P.b. 's Takeout from Winston-Salem featuring all 15 dishes and drinks can be found here on the list. P.B. 's Takeout in Winston-Salem, NC, is an acclaimed American restaurant with an impressive average rating of 4.8 stars. Diners rave about the delicious offerings and welcoming atmosphere. Open daily from 11:00 AM to 8:00 PM, it's a popular choice, so be sure to call ahead at (336) 748-8990 to secure your table and avoid any wait. P.B. 's Takeout also caters to vegetarian options, ensuring there's something for everyone. In addition to their scrumptious menu, patrons can enjoy a delightful selection of coffee. If you're interested in exploring similar options, be sure to check out Ardmore Coffee and Papa John's Pizza as well. Have you dined with us before?.

# P.b. 's Takeout Menu



## Drinks

DRINKS

## Starters & Salads

FRENCH FRIES

## Chicken

CHICKEN WINGS

## Soft Drinks

LEMONADE

## Chicken Wings

WINGS

## American Food

HOT DOG

## These Types Of Dishes Are Being Served

MEAT

CHICKEN

## Side Dishes

TOTS

TATER TOTS

PICKLES

## Ingredients Used

CHILI

ONION

MUSTARD

BEEF

---

## P.b. 's Takeout

1412 S Hawthorne Rd, Winston-Salem, NC 27103, United States

### Opening Hours:

Monday 11:00 -20:00

Tuesday 11:00 -20:00

Wednesday 11:00 -20:00

Thursday 11:00 -20:00

Friday 11:00 -20:00

Saturday 11:00 -17:00

Made with [menuweb.menu](https://menuweb.menu)

