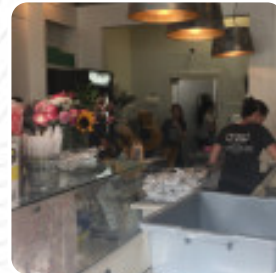
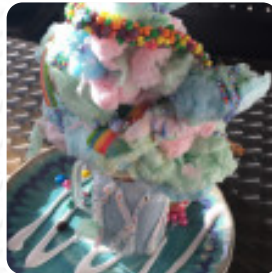
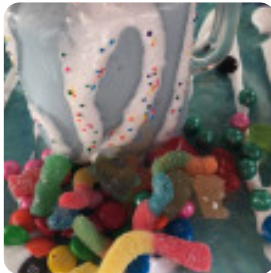




## ***Cream Sugar Cafe Menu***

<https://menulist.menu>  
7 P T Barnum Square, Bethel, CT 06801, United States  
(+1)2038006623



The menu of Cream Sugar Cafe from [Bethel](#) includes 16 dishes. On average, **dishes or drinks on the menu** cost about \$6.1. The categories can be viewed on the menu below. What [User](#) likes about Cream Sugar Cafe: Awesome. The ice cream is delicious. Their sundaes and milkshakes are huge. It's pricey but well worth the hour travel we had to do. Customer service was spot on. Very polite and personable. I will definitely make another hour trip to go there again [read more](#). If you crave for sweet treats, Cream Sugar Cafe with its delicious desserts can easily make an end of it, Furthermore, the customers of the establishment enjoy the large selection of the various *coffee and tea specialities* that the restaurant has available. Apart from simple snacks, sweet pieces and cakes, there are also **cold and hot drinks**, and you have the opportunity to try scrumptious American meals like [Burger or Barbecue](#).

# Cream Sugar Cafe Menu



## Süße Desserts

BROWNIE \$2.0

## Snacks

BROWNIES

## Ice cream cup

BANANA SPLIT \$9.0

## Sweets & Ice

COOKIES

## Sweets & Desserts

SUNDAE

## Desserts

PRETTY BIG ICE CREAM SANDWICH \$9.0

## Restaurant Category

DESSERT

*These types of dishes are being served*

ICE CREAM

## Original Milkshakes

ORIGINAL MILKSHAKE (THICK CREAMY) \$9.9

## 10 most popular

SHAKE

MILK SHAKES

## Dessert



4 SCOOPS OF ICE CREAM \$6.9

3 SCOOPS OF ICE CREAM \$5.7

2 SCOOPS OF ICE CREAM \$4.6

CHOCOLATE CHIP COOKIE \$2.0

MILKSHAKES

# ***Cream Sugar Cafe Menu***



## ***Cream Sugar Cafe***

7 P T Barnum Square, Bethel, CT  
06801, United States

**Opening Hours:**  
Friday 17:00-20:00  
Saturday 15:00-20:00  
Sunday 15:00-20:00

 gallery image

