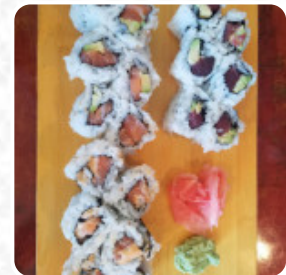




Lee's Sushi Menu

<https://menulist.menu>
438 US Highway 206, Hillsborough, United States
(+1)9088293140



The menu of Lee's [Sushi](#) from Hillsborough includes **16** meals. On average, **meals or drinks on the menu** cost about \$11.6. The categories can be viewed on the menu below. What [User](#) likes about Lee's [Sushi](#): With so many restaurants in Hillsborough and Somerville area, Lees Sushi is always our go-to sushi restaurant. Your sashimi is always fresh; I know b/c I have very sensitive stomach. We love their special roles and varieties of appetizers. Our favorites are spider roll, green dragon roll, beef tatake and Himachi kama, just to name a few. If you weren't there, try it, and you won't be disappointed. [read more](#). As a guest, you can use the WiFi of the place free of charge. In the Lee's Sushi from Hillsborough, a lot of emphasis is placed on the preparation of easy-to-digest, delicious Japanese dishes with fresh vegetables, fish and meat, On the menu there are also several Asian dishes. But the undisputed highlight of this place is the delicious *Sushi such as Nigiri and Inside-Out*, Furthermore, the guests love the creative combination of different menus with new and partially experimental products - a nice example of successful [Asian Fusion](#).

Lee's Sushi Menu



Salads

HIYASHI WAKAME \$4.5

King California Rolls

DRAGON ROLL

Sushi Rolls

SPIDER ROLL

Soups

SEAFOOD SOUP \$6.5

Sushi Don

CHIRASHI SUSHI \$20.0

Appetizer

KAMA

Soups & Salads

ASPARAGUS SALAD \$5.0

Sonstiges

SASHIMI \$10.0

Soups of the Day

HOUSE SOUP \$6.5

Dinner with Miso Soup

TUNA ROLL DINNER \$16.8

Main courses

SUSHI \$9.0

CRAB

Dinner Box Special

SUSHI, SHRIMP TEMPURA,
CHICKEN TERIYAKI DINNER BOX \$18.0
SPECIAL

SASHIMI, SHRIMP TEMPURA,
SEAFOOD TERIYAKI DINNER BOX \$20.0
SPECIAL

Ingredients Used

TRAVEL

BEEF

Lee's Sushi Menu



Lee's Sushi

438 US Highway 206,
Hillsborough, United States

Made with menulist.menu

Opening Hours:

Monday 11:30 -14:30 16:30 -22:00

Tuesday 11:30 -14:30 16:30 -22:00

Wednesday 11:30 -14:30 16:30
-22:00

Thursday 11:30 -14:30 16:30 -22:00

Friday 11:30 -14:30 16:30 -22:30

Saturday 12:00 -22:30

Sunday 15:30 -21:30

