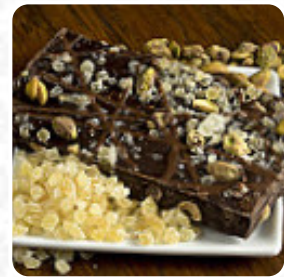




The Chocolate Chisel Menu

<https://menuweb.menu>

125 W Grand Ave, 53074, Port Washington, US, United States
(+1)2622610200 - <http://www.chocolatechisel.com/>



A comprehensive [menu](#) of The Chocolate Chisel from Port Washington covering all 16 meals and drinks can be found here on the card.

The Chocolate Chisel Menu



Drinks

BEER

Dessert

WAFFLE

Ice Cream*

SUNDAE

Hot Drinks

COFFEE

Restaurant Category

GLUTEN FREE

These Types Of Dishes Are Being Served

FISH

ICE CREAM

Ingredients Used



BUTTER

CHOCOLATE

PEANUT BUTTER

HONEY

EGG

CARAMEL

CHOCOLATE CHIP

GINGER

PEPPERMINT

The Chocolate Chisel

125 W Grand Ave, 53074, Port
Washington, US, United States

Opening Hours:

Monday 11:00 -20:00
Tuesday 11:00 -20:00
Wednesday 11:00 -20:00
Thursday 11:00 -20:00
Friday 11:00 -20:00
Saturday 11:00 -20:00
Sunday 11:00 -20:00

Made with menuweb.menu

