

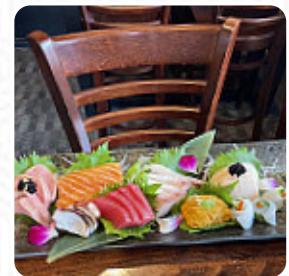
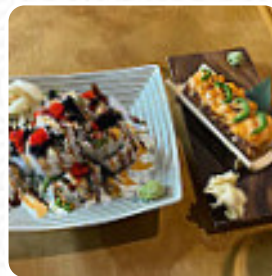
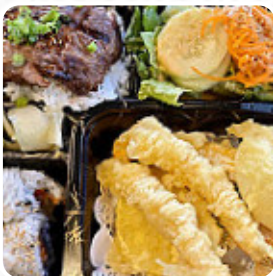


## ***Blue Fin Sushi And Resturaunt Menu***

<https://menulist.menu>

4138 NE Broadway St, Portland I-97232-1830, United States

+15032883644 - <http://www.bluefinsushibar.net/>



The menu of Blue Fin Sushi And Resturaunt from Portland includes 16 dishes. On average, dishes or drinks on the card cost about \$12.3. The categories can be viewed on the menu below. What [User](#) likes about Blue Fin Sushi And Resturaunt:

blue flo thunfish roll good, but uncertain if I would reorder again resashimi board loved the blue thunfish bauch especially loved the lachs alsokarage loved the white sauce desire there small pieces though, I like small crispy pieces, total preference these pieces were great and juicy and really good also super friendly service. I really liked our server. she was really great to recommend items and was super attentivi... [read more](#). The restaurant also offers the possibility to sit outside and eat in nice weather, And into the accessible spaces also come customers with wheelchairs or physical disabilities. In Portland, traditional meals are prepared in the kitchen of Blue Fin [Sushi](#) And Resturaunt with typical *Asian spices delicious*, The barbecued food is freshly cooked here on an open flame. Undoubtedly, the highlight of this place is the delightful [Sushi](#) such as Maki and Te-Maki, the guests love having the chance to watch the latest games or races on the big TV in this **sports bar**, while also enjoying food and drinks.

# Blue Fin Sushi And Resturaunt Menu



## **Pizza**

FUSION

## **Main courses**

SUSHI

## **Sushi Specials**

PHILADELPHIA ROLL

## **Sonstiges**

SASHIMI

## **Popular Items**

26. PAD SEE EW

## **Lo Mein/Pad**

## **Thai/Vermicelli/Mei Fun**

25. PAD THAI

## **Ingredients Used**

SALMON

**These types of dishes are  
being served**

FISH

## **Appetizers**

A1. THAI ROLLS \$6.5

A2. FRIED WONTONS \$6.5

## **Isaan Special Salads**

E6. PAPAYA SALAD \$8.5

E7. SALTED EGG PAPAYA SALAD \$9.0

## **Saima Sushi Salad**

B9. HIYASHI WAKAME SALAD \$5.0

B10. SALMON SKIN SALAD \$8.0

## **Saima Sushi Dinner Special**

D1. SUSHI DINNER A \$25.0

D2. SUSHI DINNER B \$30.0

# ***Blue Fin Sushi And Restauraunt Menu***



## ***Blue Fin Sushi And Restauraunt***

4138 NE Broadway St, Portland  
I-97232-1830, United States

**Opening Hours:**  
Sunday 16:00-21:00  
Monday 11:00-21:00  
Tuesday 11:00-21:00  
Wednesday 11:00-21:00  
Thursday 11:00-21:00  
Friday 11:00-22:00  
Saturday 11:00-22:00

Made with [menulist.menu](https://menulist.menu)

