



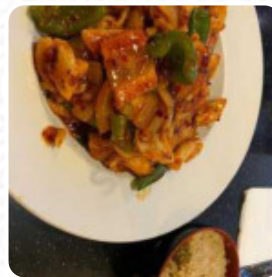
Kiyomi Sushi Steakhouse Menu

<https://menulist.menu>

120 W Columbus Ave, 43311, Bellefontaine, US, United States

+19375996688,+19375920767 - [https://www.kiyomisushi.com/?](https://www.kiyomisushi.com/?utm_source=gmb&utm_medium=website)

[utm_source=gmb&utm_medium=website](https://www.kiyomisushi.com/?utm_source=gmb&utm_medium=website)



Here you can find the menu of Kiyomi Sushi Steakhouse in Bellefontaine. At the moment, there are 16 courses and drinks on the menu. You can inquire about [changing offers](#) via phone. What [User](#) likes about Kiyomi Sushi Steakhouse:

fresh sushi every time I go. absolutely love eating here every time and the service is always great. I'm here several times and can say I never had a bad experience. [read more](#). What [User](#) doesn't like about Kiyomi Sushi Steakhouse:

teresa is rude. I have been there twice, both paintings I ordered from her, she had a posture and thinks you were ordering months between them. I was only here this time because I ordered for a group of Honda employees and they wanted to. I ordered for a pickup of 8 o'clock for her lunchtime and was told that the order was already in operation and she wouldn't change it. I talked to the manager about it, hopefully fi... [read more](#). For you, Kiyomi Sushi Steakhouse from [Bellefontaine](#) prepares delicious sushi (e.g., Maki and Sashimi), in many additional versions, with fresh ingredients like fish, vegetables and meat, Many customers are especially looking forward to the **versatile, flavorful Chinese cuisine**. Kiyomi Sushi Steakhouse focuses on a lot of freshly harvested vegetables, fish and meat in its **easily digestible Japanese cuisine**.

Kiyomi Sushi Steakhouse Menu



Main courses

SUSHI

Starters

SESAME CHICKEN

Chicken dishes

LEMON CHICKEN

Soup

HOT AND SOUR SOUP

Mexican dishes

CHILLI

Sichuan dishes

ORANGE CHICKEN

Vegetables

EGG ROLLS

Fried Rice

FRIED RICE

Fried Rice & Noodles

LO MEIN

Jump-Starters

POT STICKERS

***These types of dishes are
being served***

SOUP

Non alcoholic drinks

LEMON

MONSTER

Ingredients Used

TRAVEL

CHICKEN

EGG

Kiyomi Sushi Steakhouse Menu



Kiyomi Sushi Steakhouse

120 W Columbus Ave, 43311,
Bellefontaine, US, United States

Opening Hours:

Friday 03:30 -22:00
Saturday 03:30 -22:00
Sunday 12:00-21:00
Monday 03:30 -21:30
Tuesday 03:30 -21:30
Wednesday 03:30 -21:30
Thursday 03:30 -21:30

Made with menulist.menu

