



The Station Menu

<https://menulist.menu>

1600 S Roberto Maestas Festival St, 98144, Seattle, US, United States
+12064534892,+12069311357 - <https://www.thestationbh.com>



A comprehensive menu of The Station from Seattle covering all 16 menus and drinks can be found here on the food list. For **changing offers**, please get in touch via phone or use the contact details provided on the website.

What [User](#) likes about The Station:

I love the station! beautiful coffee (the diablo mocha is my way to- it is not so sweet, and it is delicious.) the breakfast sandwiches are delicious and the night made from real ingredients. I also love the dedication of the station to the common. I always learn about new festivals and other small makers of them. it is friendly and lively, and a coffee shop I go out of the way to visit. highly recommended. [read more](#). The restaurant also offers the possibility to sit outside and have something in nice weather. What [User](#) doesn't like about The Station:

our a shot 8 oz latte were definitiw out. my one shot 8 oz D'Angelo (brown sugar latte) was so sweet I could hardly taste any caffeine; probably needed the whole two dishes! they also have some food options. fun looking place! [read more](#). The Station from Seattle is a **comfortable café**, where you can have a small snack or cake with a warm coffee or a hot chocolate, The fine sandwiches, small salads and other snacks are also suitable for a snack. Of course, we must not forget the large variety of coffee and tea specialties in this locale, Forbreakfast a *hearty brunch* is offered here.

The Station Menu

Breakfast

BREAKFAST SANDWICH

Soft drinks

COLA

Mexican

MEXICANA

*Ice cream**

VANILLA

Pop Tarts

BLUEBERRY

Drinks

DRINKS

Ingredients Used

MILK

These types of dishes are being served

PANINI

Non alcoholic drinks

WATER

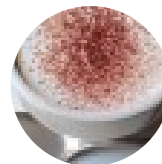
MINERAL WATER

Restaurant Category

MEXICAN

VEGAN

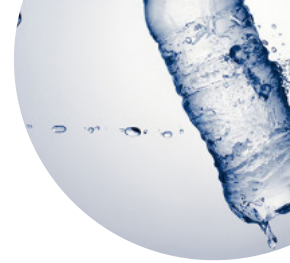
Coffee



MOCHA

COFFEE

VANILLA LATTE



The Station Menu



The Station

1600 S Roberto Maestas Festival
St, 98144, Seattle, US, United
States

Opening Hours:

Monday 07:00 -17:00
Tuesday 07:00 -17:00
Wednesday 07:00 -17:00
Thursday 07:00 -17:00
Friday 07:00 -17:00
Saturday 07:00 -17:00
Sunday 07:00 -17:00

Made with menulist.menu

 gallery image

