

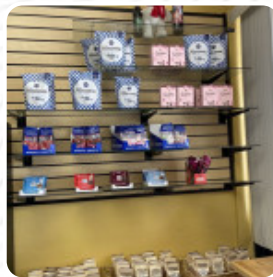


Polar Bakery (congress Ave) Menu

<https://menulist.menu>

5817 S Congress Ave, Lantana, United States

(+1)5612144545,(+1)5616519445 - <https://www.polarbakery.com/index.html>



[The Card](#) of Polar Bakery (congress Ave) from Lantana contains about 16 different dishes and drinks. On average, you pay for a dish / drink about \$5.9. What User likes about Polar Bakery (congress Ave): this is my go to Dessert-Spot. no sweat, they have the best of the best here in their bakery! if they don't have yet, they just have to pass and try one of their delicious desserts and cakes. also they have licorice, Swedish sweets, coffee, etc. all kinds of dinger! [read more](#). The restaurant offers complimentary WLAN for its guests, And into the accessible rooms also come customers with wheelchairs or physiological disabilities. If the weather are right, you can also have something to eat outside. What User doesn't like about Polar Bakery (congress Ave): the name must explain the icy reception I got when I ordered a coffee. I was told I had to wait while it was brewed. I'll wait. it takes a while. it was 2.30; the place closes by 4. it is a bakery that serves bakery. no coffee! then I was asked if I wanted a small or large portion. "I know how much I'm supposed to do. "I went [read more](#). At Polar Bakery (congress Ave) in Lantana, there's a hearty brunch for breakfast where you can indulge enjoy, At the bar, you can unwind with a **freshly tapped beer** or other alcoholic and non-alcoholic drinks. Not to be left out is the comprehensive selection of **coffee and tea specialties** in this restaurant, Furthermore, the drinks menu in this restaurant is impressive and offers a good and comprehensive variety of beers from the area and from worldwide, which are definitely worth a try.

Polar Bakery (congress Ave) Menu



Biscuits and Cookies

CHEESECAKE

Restaurant Category

DESSERT

Ingredients Used

CHOCOLATE

These types of dishes are being served

DESSERTS

Chocolates

FREIA MILK CHOCOLATE BAR \$4.5

FREIA HAZELNUT CHOCOLATE BAR \$4.5

Coffee

ESPRESSO

COFFEE

Candy

HERMANN THE GERMAN BAVARIAN FRUIT ASSORTED CANDY \$4.3

HERMANN THE GERMAN RASPBERRY HARD CANDY \$4.3

Grocery

LEKSANDS WEDGE CRISPBREAD \$3.9

HAFI BLACK CURRANT PRESERVES \$6.9

Imported Drinks

JULMUST CHRISTMAS SODA \$3.8

PAULIG PRESIDENTE \$15.0

Artisan & Sweet Breads

SKORPA AND KORPUJA \$5.5

CINNAMON SWIRL CARDAMOM BREAD \$6.3

Polar Bakery (congress Ave) Menu



Polar Bakery (congress Ave)

5817 S Congress Ave, Lantana,
United States

Opening Hours:

Monday 08:00 -16:00
Tuesday 08:00 -16:00
Wednesday 08:00 -16:00
Thursday 08:00 -16:00
Friday 08:00 -16:00
Saturday 08:00 -16:00

Made with menulist.menu

