

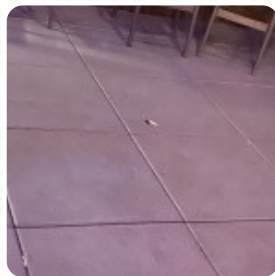
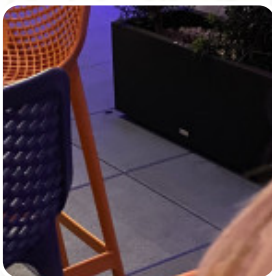


Embassy Suites- Cloud 9 Menu

<https://menulist.menu>

9 Estell Lee Place, Wilmington, United States

(+1)9107267227,(+1)9107269227 - <http://www.cloud9ilm.com/>



The Card of Embassy Suites- Cloud 9 from Wilmington contains about 16 different menus and drinks. On average, you pay for a dish / drink about \$13.2. What [User](#) likes about Embassy Suites- Cloud 9:

The views of the Cape Fear Area are incomparable and the drinks are great with excellent service from all waiting staff to constantly check for your drinks and needs. The menu is limited pub fare with a burger, some flat breads and a fried article or two, but it is good with the ambience and open-air experience. Enjoy casual and relaxed afternoons, evening sunsets or night lights before your event in Wilmington's pre... [read more](#). When the

weather is pleasant you can also eat outside. What [User](#) doesn't like about Embassy Suites- Cloud 9: Beautiful views! I wasn't too fond of my drink and the wings were good and a nice size. Unfortunately I got sick a few hours after eating them so I threw the rest away. A waste of \$16 [read more](#). During meals, a refreshing drink is essential. In this **gastropub**, you will find not only delectable menus, but also a large and comprehensive variety of good beers and other alcoholic drinks that compliment the food, There are also delicious *South American* menus on the menu. You have the option to, after the meal (or during it), still relax at the bar with an alcoholic or non-alcoholic drink, and you can enjoy here tasty American dishes like Burger or Barbecue.

Embassy Suites- Cloud 9 Menu



Alcoholic Drinks

BEER

TRIPLE PIG BUNS

\$15.0

ESQUITIS CON JAIBA

\$12.0

Appetizers

CLASSIC SHRIMP COCKTAIL \$15.0

Snacks

BLACK EYED PEA FALAFEL \$11.0

Starters & Salads

POTATOE CHIPS

Drinks

DRINKS

Starters

JERK CHICKEN WINGS \$15.0

CHARCUTERIE

*These types of dishes are
being served*

BURGER

PIZZA

Mains

HOT HOUSE TOMATO
WATERMELON SALAD \$12.0

LOBSTER ROLL CONEYS \$15.0

PORK RINDS PIMENTO \$9.0

CLOUD 9 FLAT BREAD \$13.0

ROCK SHRIMP CHILAQUILES \$15.0

Embassy Suites- Cloud 9 Menu



Embassy Suites- Cloud 9

9 Estell Lee Place, Wilmington,
United States

Opening Hours:

Monday 04:00 -23:00
Tuesday 04:00 -23:00
Wednesday 04:00 -23:00
Thursday 04:00 -23:00
Friday 04:00 -23:00
Saturday 01:00 -23:00
Sunday 01:00 -23:00

Made with menulist.menu

 gallery image

