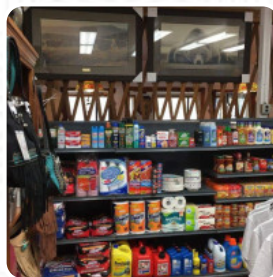
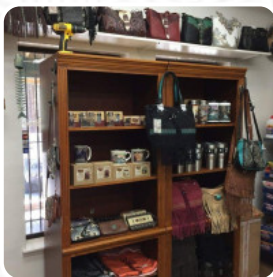


Alpine Cafe Store, Gasoline Menu

<https://menulist.menu>
19750 CA-89, 96120, Markleeville, US, United States
(+1)5306949989



We might have **the meal plan of Alpine Cafe Store, Gasoline** from Markleeville in the photos. A meal plan can be found further down. Are you currently at Alpine Cafe Store, Gasoline or planning a visit? Help us by **uploading the menu here**. What [User](#) likes about Alpine Cafe Store, Gasoline:

Took us driving past this place many times before we realized that it was open! It was a nice welcome after riding motorcycles all day to see a big parking lot, a choice of indoor and outside seating AND a clean restroom!! We ordered the grilled fish tacos and a Caesar salad topped with avocado. Of course you can't pass up their chocolate chip cookies and fresh homemade pies! The place is nice, clean and comfy. [read more](#). In pleasant weather you can even eat and drink in the outdoor area, and there is no-charge WLAN. The premises on site are accessible, and therefore no problem for visitors with wheelchairs or physiological limitations. Alpine Cafe Store, Gasoline from Markleeville is a *comfortable café*, where you can have a small snack or cake with a hot coffee or a sweet chocolate, Naturally, you should also taste the scrumptious burgers, accompanied by sides like fries, salads, or wedges offered.

Alpine Cafe Store, Gasoline Menu



Salad

CAESAR SALAD

Fish dishes

FISH TACOS

Starters & Salads

FRIES

Dessert

CHOCOLATE CHIP COOKIES

Cookies

CHOCOLATE CHIP

Sweets & Ice

COOKIES

Coffee

COFFEE

Salads

TACOS

CAESAR SALAD

*These types of dishes are
being served*

SALAD

FISH

Ingredients Used

CHOCOLATE

AVOCADO

STRAWBERRY

BANANA

Alpine Cafe Store, Gasoline Menu



Alpine Cafe Store, Gasoline

19750 CA-89, 96120,
Markleeville, US, United States

Opening Hours:

Monday 11:00 -19:00
Tuesday 11:00 -19:00
Wednesday 11:00 -19:00
Thursday 11:00 -19:00
Friday 11:00 -19:00
Saturday 11:00 -19:00
Sunday 11:00 -19:00

Made with menulist.menu

 gallery image

