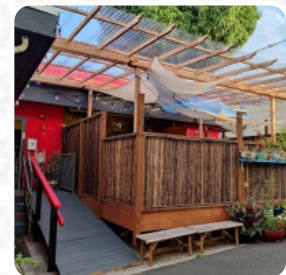
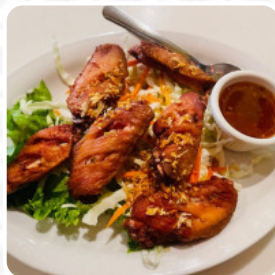




Red Elephant Thai Cuisine Menu

<https://menulist.menu>

3196 Waiialae Ave, 96816, Honolulu, US, United States
+18087325461 - <http://www.redelephantthaicuisinehi.com/>



We might have [the meal plan of Red Elephant Thai Cuisine](#) from Honolulu in the gallery. A meal plan can be found further down. Are you currently at Red Elephant Thai Cuisine or planning a visit? Help us by **publishing the menu here**. What [User](#) likes about Red Elephant Thai Cuisine:

I ordered Pad Thai and I expected more of a peanut taste but it didn't have it at all. The plus side is you can BYOB and the atmosphere is fun. The waitress was very good. [read more](#). The place also offers the possibility to sit outside and eat and drink in beautiful weather, And into the accessible spaces also come clientele with wheelchairs or physical disabilities. WiFi is available free of charge. What [lo vi](#) doesn't like about Red Elephant Thai Cuisine:

Prices have gone up and portions have gone down. Over \$16 for a small plate of ground beef with some cabbage and no rice. Really unfortunate because used to be one of my favorite places. Waitress said I could make a reservation but couldn't reserve a table? What would happen if I came for my reservation and every table was full? That's why she's a waitress and not a doctor I guess. Really lovely place so such a shame. G... [read more](#). Red Elephant Thai Cuisine The *brilliant Asian fusion cuisine* will thrill you, the perfect balance of traditional dishes and exciting new creations will amaze!, With the popular spices and fish sauces, **Thai menus** are prepared here. Would you rather enjoy the food in your own four walls or at a special place like a festival? Thanks to the in-house catering, that's easily possible, and you can look forward to the scrumptious typical seafood cuisine.

Red Elephant Thai Cuisine Menu



Non alcoholic drinks

WATER

Appetizers

FRIED TOFU

Extras

GINGER

Main Dishes

RED CURRY

Starters & Salads

SHRIMP

Chicken dishes

CASHEW CHICKEN

*Thai specialties**

PAD THAI

Fried Rice

FRIED RICE

Condiments and Sauces

CURRY

Restaurant Category

BBQ

These types of dishes are being served

STEAK

Ingredients Used

TRAVEL

BEEF

TOFU

CHICKEN

Red Elephant Thai Cuisine Menu



Red Elephant Thai Cuisine

3196 Waialae Ave, 96816,
Honolulu, US, United States

Opening Hours:

Monday 12:00 -21:30
Tuesday 12:00 -21:30
Wednesday 12:00 -21:30
Thursday 12:00 -21:30
Friday 12:00 -21:30
Saturday 12:00 -21:30
Sunday 04:00 -21:30

Made with menulist.menu

 gallery image

