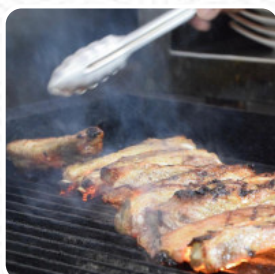




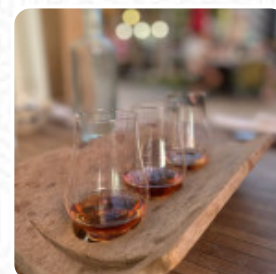
1938	
<p><b>Asi Refresher</b> with rock, lime, mint, ginger &amp; sliced orange seeds</p> <p><b>Lachas Martin</b> Blackberry vodka, Cointreau, fresh lychee puree, lime, orange slices</p> <p><b>The Margarin</b> Garnet, blackberry, vanilla, apricot, lime white pepper, sprig orange leaves, passionfruit, orange</p> <p><b>Indochine Paloma</b> Garnet, blanco tequila, passionfruit, grapefruit, agave, lime</p> <p><b>Optim D'een</b> Saffron, rosemary, sliced orange leaves, blackberry salt</p> <p><b>Smoking Passion</b> White rum, pineapple, starfruit, blackberry, lime, agave, white, vanilla fruit</p> <p><b>Green &amp; Lemongrass</b> Limoncello, mandarin, lemongrass, lime, lemongrass, sprig lime</p> <p><b>Xo Hoa Tea</b> Custard, matcha, mint, agave, lime, lemongrass, lime, orange, blackberry, blackberry, lime, fruit</p> <p><b>Cl Fêd Marin</b> Tahitian rum, blackberry, lime, ginger, blackberry, lime, orange, blackberry, lime</p> <p><b>Asi Swish Flight</b> Cointreau, lime, mandarin, star fruit, lime, lime</p> <p><b>Award Winning Flight</b> White rum, blackberry, vanilla, apricot, lime, white pepper, sprig orange leaves, passionfruit, orange</p>	<p><b>WHITE by the glass</b>  <b>Carsonville</b>, white blend, California 12  <b>Icon</b>, shiraz, Sonoma County 12  <b>Icon</b>, shiraz, Sonoma County 12  <b>Icon</b>, shiraz, Sonoma County 12  <b>Icon</b>, shiraz, Sonoma County 12  <b>Icon</b>, shiraz, Sonoma County 12  <b>Icon</b>, shiraz, Sonoma County 12  <b>Icon</b>, shiraz, Sonoma County 12  <b>Icon</b>, shiraz, Sonoma County 12  <b>Icon</b>, shiraz, Sonoma County 12  <b>Icon</b>, shiraz, Sonoma County 12</p> <p><b>RED by the glass</b>  <b>Carsonville</b>, white blend, California 12  <b>Icon</b>, shiraz, Sonoma County 12  <b>Icon</b>, shiraz, Sonoma County 12  <b>Icon</b>, shiraz, Sonoma County 12  <b>Icon</b>, shiraz, Sonoma County 12  <b>Icon</b>, shiraz, Sonoma County 12  <b>Icon</b>, shiraz, Sonoma County 12  <b>Icon</b>, shiraz, Sonoma County 12  <b>Icon</b>, shiraz, Sonoma County 12  <b>Icon</b>, shiraz, Sonoma County 12  <b>Icon</b>, shiraz, Sonoma County 12</p> <p><b>ROSE by the glass</b>  <b>Icon</b>, shiraz, Sonoma County 12</p> <p><b>BUBBLES</b>  <b>Icon</b>, shiraz, Sonoma County 12  <b>Icon</b>, shiraz, Sonoma County 12  <b>Icon</b>, shiraz, Sonoma County 12</p> <p><b>DESSERT WINE</b>  <b>Icon</b>, shiraz, Sonoma County 12</p>

# 1938 Indochine Menu

<https://menulist.menu>  
 602 Ala Moana Blvd, Honolulu I-96813-4901, United States  
 +18085457777 - <http://www.1938indochine.com/>



1938	
<p><b>Icon</b>, shiraz, Sonoma County 12  <b>Icon</b>, shiraz, Sonoma County 12  <b>Icon</b>, shiraz, Sonoma County 12  <b>Icon</b>, shiraz, Sonoma County 12  <b>Icon</b>, shiraz, Sonoma County 12  <b>Icon</b>, shiraz, Sonoma County 12  <b>Icon</b>, shiraz, Sonoma County 12  <b>Icon</b>, shiraz, Sonoma County 12  <b>Icon</b>, shiraz, Sonoma County 12  <b>Icon</b>, shiraz, Sonoma County 12  <b>Icon</b>, shiraz, Sonoma County 12</p>	<p><b>Icon</b>, shiraz, Sonoma County 12  <b>Icon</b>, shiraz, Sonoma County 12  <b>Icon</b>, shiraz, Sonoma County 12  <b>Icon</b>, shiraz, Sonoma County 12  <b>Icon</b>, shiraz, Sonoma County 12  <b>Icon</b>, shiraz, Sonoma County 12  <b>Icon</b>, shiraz, Sonoma County 12  <b>Icon</b>, shiraz, Sonoma County 12  <b>Icon</b>, shiraz, Sonoma County 12  <b>Icon</b>, shiraz, Sonoma County 12  <b>Icon</b>, shiraz, Sonoma County 12</p>



Here you can find the menu of 1938 Indochine in Honolulu. At the moment, there are 7 menus and drinks on the card. You can inquire about **changing offers** via phone. What [User](#) likes about 1938 Indochine: Great location in Kaka'ako, especially if you're trying to get out of Waikiki for a minute. Serving is Tapas or Family Style. Cocktails and service were amazing. Highly recommend. Some vegan options available. [read more](#). The restaurant also offers the possibility to sit outside and eat in pleasant weather, And into the accessible spaces also come guests with wheelchairs or physiological disabilities. WiFi is available without additional charges. What [Alyona S](#) doesn't like about 1938 Indochine: Very odd experience: we came after reading reviews and hearing great things from locals about this place. There was not that much for us to eat cos 80% of the menu coked with pork and bacon. We specifically requested our food to have none of these, but still got it. Ordered 6 dishes, barely ate just one. Cocktails were sub par. We left hungry. [read more](#). During meals, a refreshing drink is essential. In this *gastropub*, you will find not only delectable cuisine, but also a large and comprehensive variety of good beers and other alcoholic drinks that compliment the food, In addition, numerous visitors look forward to enjoying traditional Vietnamese meals with the perfect hint of Southeast Asian flavor during a stop at the 1938 Indochine. Not to forget, 1938 Indochine offers naturally also Malaysian national dishes like Roti, Naan and of course also a large selection of rice dishes, For you, the dishes are normally prepared fast and fresh.

# 1938 Indochine Menu



## *Non alcoholic drinks*

WATER

## *Alcoholic Drinks*

BEER

## *Pizza*

FUSION

## *Extras*

GINGER

## *Drinks*

DRINKS

## *Condiments and Sauces*

CURRY

## *Restaurant Category*

VEGAN

FRENCH

COCKTAIL

## *Ingredients Used*

CARAMEL

SCALLOPS

MANGO

*These types of dishes are  
being served*

SOUP

NOODLES

SALAD

# *1938 Indochine Menu*



## *1938 Indochine*

602 Ala Moana Blvd, Honolulu I-  
96813-4901, United States

### **Opening Hours:**

Monday 04:00 -22:00  
Tuesday 04:00 -22:00  
Wednesday 04:00 -22:00  
Thursday 04:00 -23:00  
Friday 04:00 -23:00  
Saturday 04:00 -23:00  
Sunday 04:00 -22:00

Made with [menulist.menu](https://menulist.menu)

 gallery image

