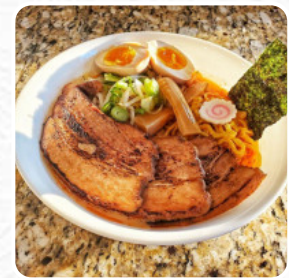
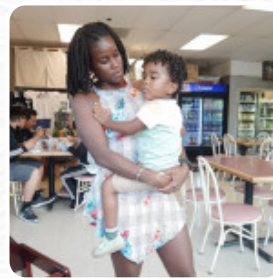
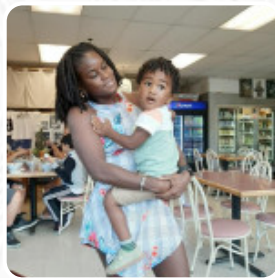




Menya Hosaki Menu

<https://menulist.menu>

10010 Junction Dr, Annapolis Junction I-20701-1157, United States
(+1)4435197669



The restaurant from Annapolis Junction offers **10 different meals and drinks on [the card](#)** at an average price of \$11.9. What [Carol B](#) likes about Menya Hosaki:

First visit Fri. dinner with my daughters. We all ordered the same thing Classic Shoyu Ramen. It was delicious! Everything is fresh and made to order. Located in an office park. I've been several times now. Staff are very nice and accommodating. One of my favorite places. COVID update: Went a few weeks ago after restaurants opened again and they had a few tables and chairs outside which were perfect, so there's an op... [read more](#). The rooms on site are wheelchair accessible and can also be used with a wheelchair or physical limitations. Enjoy a little bit of this and a little bit of everything at the restaurant, known for its popular **Tapas**.

Menya Hosaki Menu



Soups

CLASSIC TONKOTSU RAMEN \$15.0

Main courses

TOPPINGS

Dessert

TRIPLE THREAT \$17.0

Noodle

RAMEN

Beverages

BOTTLED DIET DR. PEPPER \$1.5

Popular Items

CLASSIC SHOYU RAMEN \$15.0

Bottled Beverages

BOTTLED DIET COCA-COLA \$1.5

Get \$0 delivery fees on your first order (of \$20 or more) from this store.

BOTTLED COCA-COLA \$1.5

Neighborhood Burgers

THE CLASSIC

Ingredients Used

MISO

These types of dishes are being served

SOUP

Ramen

BALTIMORE SUN \$17.0

TRUFFLE SHOYU \$17.0

NEGI SHOYU \$16.5

YOKOHAMA IEKEI \$17.0

Menya Hosaki Menu



Menya Hosaki

10010 Junction Dr, Annapolis
Junction I-20701-1157, United
States

Opening Hours:
Wednesday 17:00-21:00
Thursday 17:00-21:00
Friday 17:00-21:00
Saturday 12:00-21:00

 gallery image

