

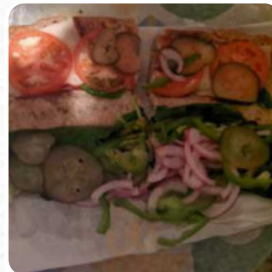


Subway Menu

<https://menulist.menu>

66 Route 27, Raymond I-03077, United States

(+1)6032241952,(+1)6032441952 - https://restaurants.subway.com/United-states/nh/raymond/66-route-27?y_source=1_MTQ4OTM5NzctNDQwLWxvY2F0aW9uLndlYnNpdGU=



A comprehensive [menu](#) of Subway from Raymond covering all **10** dishes and drinks can be found here on the food list. For **changing offers**, please get in touch via phone or use the contact details provided on the website.

What [User](#) likes about Subway:

I love this subway compared to the others. The subs are always done as I wanted, the pace is normal, and I always have a greeting from an old friend from primary school. Best Metro in New Hampshire! [read more](#). What

[rick.j](#) doesn't like about Subway:

Too many bugs flying around when I tried to seat and eat my sub at a table there. Service: Dine in Meal type: Lunch Price per person: \$1–10 Food: 4 Service: 3 Atmosphere: 1 [read more](#). The restaurant and its premises are wheelchair accessible and thus reachable with a wheelchair or physical limitations, Depending on the weather, you can also sit outside and have something. For the small hunger in between, Subway from Raymond offers scrumptious sandwiches, small salads, and other small menus, as well as cold and hot beverages, Generally, the menus are prepared in a short time and fresh for you. If you decide to come for breakfast, a hearty brunch is ready for you.

Subway Menu



Extras

EXTRA CHEESE

Chicken

SWEET ONION CHICKEN TERIYAKI

Specialties

TERIYAKI CHICKEN

Dessert

PUTO

These types of dishes are

being served



BREAD

PANINI

TURKEY

FISH

Ingredients Used



CHICKEN

CHEESE

MEAT

WE HAVE

ONION

TERIYAKI

CHICKEN TERIYAKI

Subway Menu



Subway

66 Route 27, Raymond I-03077,
United States

Opening Hours:

Monday 08:00-21:00
Tuesday 08:00-21:00
Wednesday 08:00-21:00
Thursday 08:00-21:00
Friday 08:00-21:00
Saturday 08:00-21:00
Sunday 08:00-21:00

Made with menulist.menu

 gallery image

