

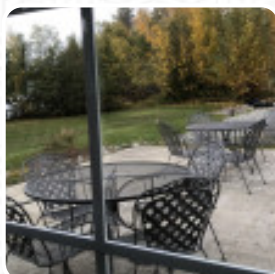
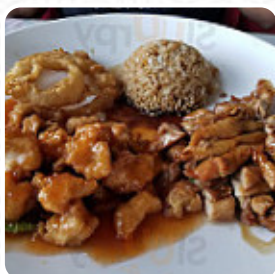


168 E Lu Fa Menu

<https://menulist.menu>

1875 E Palmer Wasilla Hwy, Wasilla I-99654-7222, United States

+19073571368



A **comprehensive menu** of 168 E Lu Fa from Wasilla covering all 4 menus and drinks can be found here on the food list. For seasonal or weekly deals, please get in touch via phone or use the contact details provided on the website. What [User](#) likes about 168 E Lu Fa:

Love this place, people are so friendly, the atmosphere is cozy and beautiful at the lake and the food is delicious. All we tried was very tasty and we never let hunger. Pair that with a large frosty Kirin Ichiban and a sunset and it is beyond a 5-star setting! [read more](#). When the weather conditions is nice you can also eat outside. What [User](#) doesn't like about 168 E Lu Fa:

My sweet n sour chicken tasted I like fish. Probably fried in same basket. I've never had sweet n sour chicken where the sauce was not on the chicken. I had to drizzle it on out of a tiny container. The steamed rice was over cooked. Egg rolls were crispy but tasted like fish also. [read more](#). In 168 E Lu Fa from Wasilla, you can enjoy *versatile, scrumptious Chinese cuisine* that's traditionally prepared in a wok, on the menu there are also a lot of Asian menus. Of course, the most various products are also used in the most creative combinations and implementations - according to the motto of the Fusion Cuisine within the offers, The successful fusion of different meals with fresh and partially daring products is highly valued by the visitors - a good example of Asian Fusion.

168 & Lu Fa Menu

Pizza

FUSION

Appetizer

TEMPURA

Fingerfood

ZWIEBELRINGE

Soft drinks

PEPSI

Vegetables

EGG ROLLS

Yaki-Grill Menü

PRAWN

Condiments and Sauces

PRAWNS

*These types of dishes are
being served*

APPETIZER

SOUP

Ingredients Used

EGG

CHICKEN

TRAVEL

ONION

TERIYAKI

CHICKEN TERIYAKI



168 E Lu Fa Menu



168 E Lu Fa

1875 E Palmer Wasilla Hwy,
Wasilla I-99654-7222, United
States

Opening Hours:

Tuesday 03:00 -20:30
Wednesday 03:00 -20:30
Thursday 03:00 -20:30
Friday 03:00 -20:30
Saturday 03:00 -20:30
Sunday 03:00 -20:30

 gallery image

