



## ***Journey's End Espresso Menu***

<https://menulist.menu>  
55 Basin St, Astoria, OR 97103, United States  
**+15033254443**



On this homepage, you can find the **complete [menu](#) of Journey's End Espresso** from Astoria. Currently, there are **15** meals and drinks up for grabs. For seasonal or weekly deals, please contact the owner of the restaurant directly. You can also contact them through their website. What [User](#) likes about Journey's End Espresso: Your coffee is delicious!!! I tried almost any other coffee shop in Astoria and that was my favorite! I get a 16oz icy white chocolate and coconut salad with oat milk. [read more](#). For breakfast, a **tasty brunch** is offered at Journey's End Espresso in [Astoria](#) that you can enjoy as much as you like, Furthermore, the customers of the establishment enjoy the extensive variety of the various coffee and tea specialities that the establishment has available. Besides small snacks and sweet pieces, we also offer cold and hot drinks and cakes, The tasty sandwiches, healthy salads and other snacks can be planned well as a snack.

# *Journey's End Espresso Menu*



## *For the small hunger*

BAGEL

## *Ice cream\**

VANILLA

## *Drinks*

DRINKS

## *Restaurant Category*

FRENCH

## *These types of dishes are being served*

SALAD

PANINI

## *Ingredients Used*

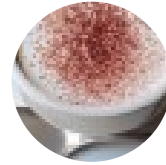
CHOCOLATE

MILK

COCONUT

EGG

## *Coffee*



MOCHA

ICED MOCHA

ESPRESSO

COFFEE

ICED LATTE

# *Journey's End Espresso Menu*



## *Journey's End Espresso*

55 Basin St, Astoria, OR 97103,  
United States

### **Opening Hours:**

Monday 05:00 -18:00  
Tuesday 05:00 -18:00  
Wednesday 05:00 -18:00  
Thursday 05:00 -18:00  
Friday 05:00 -18:00  
Saturday 05:00 -18:00  
Sunday 05:00 -18:00

Made with [menulist.menu](https://menulist.menu)

