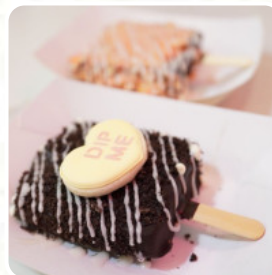




South Swell Hand Dipped Ice Cream Menu

<https://menulist.menu>

137 Avenida Del Mar, San Clemente I-92672-4017, United States
(+1)9493884984 - <http://www.southswellicecream.com/>



Here you can find the menu of South Swell Hand Dipped Ice Cream in San Clemente. At the moment, there are 16 courses and drinks on the card. You can inquire about **changing offers** via phone. What [User](#) likes about South Swell Hand Dipped Ice Cream:

Had to try South Swellicecream in #SanClemente for #instagram Posts and it was so good. The ice has not disappointed and all the photos you see on Instagram taste better than they look #icecream #southswell #southswellicecream #ocfoodie #instafoodie #dessert #handdippedicecream [read more](#). What [Lauren W](#) doesn't like about South Swell Hand Dipped Ice Cream:

Not a bad treat. They are located in a very cute walkable area of San Clemente. I ordered a vanilla bar chocolate dipped with Peanuts and butterfinger. I'm disappointed they don't have almonds. I know almonds are probably more expensive but also they elevate the experience. The ice cream is an okay texture. It's an okay treat if you are in the area. [read more](#). The premises in the restaurant are wheelchair accessible and can also be used with a wheelchair or physiological limitations. South Swell Hand Dipped Ice Cream from San Clemente is the perfect place if you want to taste tasty *American dishes like burgers or barbecue*, By availing of the **catering service** from South Swell Hand Dipped Ice Cream in [San Clemente](#), the dishes can be obtained on-site or at the festival. Even South American fresh seafood, meat, as well as corn and rice are cooked here, Also, the drinks menu at this place is exceptional and offers a significant and varied assortment of both local and international beers, which are definitely worth a try.

South Swell Hand Dipped Ice Cream Menu



Main courses

TOPPINGS

Sweets

CHOCOLATE CAKE

*Ice cream**

VANILLA

Sweets & Ice

COOKIES

Shisha

MINT

These types of dishes are being served

ICE CREAM

Restaurant Category

AMERICAN

DESSERT

Ingredients Used



CHOCOLATE

RASPBERRY

COCONUT

MILK

BANANA

BUTTER

PEANUT BUTTER

South Swell Hand Dipped Ice Cream Menu



South Swell Hand Dipped Ice Cream

137 Avenida Del Mar, San
Clemente I-92672-4017, United
States

Opening Hours:
Monday 02:00 -22:00
Wednesday 02:00 -22:00
Thursday 02:00 -22:00
Friday 02:00 -22:00
Saturday 12:00 -22:00
Sunday 12:00 -22:00

Made with menulist.menu

