

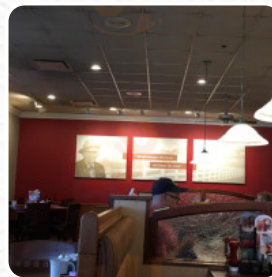
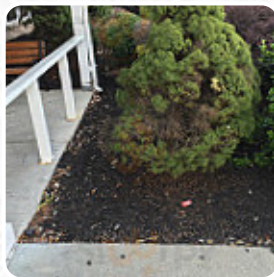
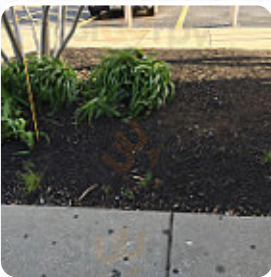


## ***Bob Evans Menu***

<https://menulist.menu>

4308 Crain Hwy, 20716, Bowie, US, United States

+13014648171 - <https://www.menupix.com/maryland/nc/200124/6/Bowie-Breakfast-Places>



The Menu of Bob Evans from Bowie includes about 79 different meals and drinks. On average, you pay for a dish / drink about \$20.6. What [User](#) likes about Bob Evans:

I've met my sister and not to the breakfast. the service was great and the food was good. I ordered a western omlette with domestic pommies and apple juice. both my niece ordered the French toast meal that my teenage son also loves. you can never go wrong with bob evan. [read more](#). The restaurant offers free WiFi for its visitors, And into the accessible rooms also come customers with wheelchairs or physical limitations. What [User](#) doesn't like about Bob Evans:

we sat on a table with menu. it was about 10 minutes before the server came to take, are ordering that we are placed drink first then are eating. then we sat for another 10 minutes, then the foods first came out and had to ask if they were drinks. I'm sorry I forgot. She said she'd take her away right away. we waited for another 10 to 15 minutes for them a simple cup coffee and sweet tee. eating my wife was in order,... [read more](#). The fresh and tasty **juices** on the drinks menu perfectly complement the dishes of the local, In the morning they serve a **varied breakfast** here. Apart from small snacks, sweet pieces and cakes, there are also *cold and hot drinks*, Of course, you also have to try the [fine burgers](#), that come with sides like fries, salads, or wedges offered.

# Bob Evans Menu



## Side dishes

CUP OF SAUSAGE GRAVY BISCUITS \$8.7

## Side Orders

FAMILY SIZE FRENCH FRIES \$16.2

## Steaks

STEAK TIPS DINNER

## Main

WESTERN OMELET \$14.9

## Kids Menü

LIL FARMER BREAKFAST \$7.0

## Brunch

SAUSAGE GRAVY BISCUITS

## Brunch Menu

STEAK TIPS EGGS \$17.9

## Sandwiches & Stuff

FISH FRY SANDWICH

## 3-Egg Omelets

BUILD YOUR OWN OMELET \$14.7

## 1/2 lb. Burgers

THE WHOLE HOG \$18.0

## More Breakfast

COUNTRY BISCUIT \$9.8

## Vegan Brunch

SAUSAGE PATTIES

## Paninis - Breakfast

RISE SHINE \$12.9

## NEW Family Meals

GRILLED CHICKEN FAMILY MEAL

## Bakery, Fruits & Sides

HARDWOOD-SMOKED BACON

## Additional Fare

FISH FRY PLATTER

## Sides \$6

CHICKEN SAUSAGE

## Meat & Rib

SAUSAGE LINKS

## Breakfast Toast of the Town Flubby Omelets

STEAK TIPS OMELET \$17.1

## Starters

FAMILY SIZE ONION RINGS \$16.2

BUTTERMILK BREAKFAST SANDWICH

## Popular Items

HOMESTEAD FARMER \$15.3

THE BIG EGG BREAKFAST \$14.4

# Bob Evans Menu



## Omelets & Skillets

SOUTHWEST AVOCADO OMELET	\$16.4
SUNSHINE SKILLET	\$14.2

## Thanksgiving Menu

DOUBLE MEAT FARMERS CHOICE	\$17.3
THE ORIGINAL FARMERS CHOICE	\$14.0

## Hotcakes & French Toast

BRIOCHE FRENCH TOAST	\$12.2
BUTTERMILK HOTCAKES	\$11.4

## New for Winter

GARDEN VEGGIE PROTEIN BOWL	\$15.3
THREE MEAT PROTEIN BOWL	\$15.9

## Breakfast Combos



FARMHAND BISCUIT SANDWICH PLATTER	\$17.0
THE EVERYTHING BREAKFAST	\$16.2
BANANA BERRY FARMER	\$16.4
SHREDDED HASH BROWNS	
HICKORY-SMOKED HAM	
BLUE RIBBON BACON	\$6.5
COUNTRY-FRIED STEAK FARM-FRESH EGGS*	\$15.3
CINNA-BISCUITS	\$5.2
GOLDEN BROWN HOME FRIES	

## Family-Size Breakfast

RISE SHINE FAMILY BREAKFAST	\$44.6
-----------------------------	--------



FARMERS CHOICE FAMILY BREAKFAST	\$53.5
FAMILY SIZE HARDWOOD-SMOKED BACON	\$16.2
FAMILY SIZE SAUSAGE GRAVY BISCUITS	\$17.4
FAMILY SIZE GOLDEN BROWN HOME FRIES	\$16.2
BUTTERMILK BISCUIT SANDWICH BUNDLE	
HOMESTEAD FAMILY BREAKFAST	\$59.5
FAMILY SIZE SHREDDED HASH BROWNS	\$16.2
FAMILY SIZE SAUSAGE PATTIES	\$16.2
FAMILY SIZE HICKORY-SMOKED HAM	\$16.2
BRUNCH FOR A BUNCH BUNDLE	\$89.2
FAMILY SIZE SAUSAGE LINKS	\$16.2

## Family Meals

HOMESTYLE FRIED CHICKEN TENDER FAMILY MEAL	
FAMILY SIZE CHICKEN COBB SALAD	\$37.2
FAMILY SIZE BOB EVANS WILDFIRE CHICKEN SALAD	\$37.2
FAMILY SIZE CRANBERRY PECAN CHICKEN SALAD	\$41.0
FAMILY SIZE FARMHOUSE GARDEN SIDE SALAD	\$16.2
FAMILY SIZE CHEDDAR BAKED POTATO SOUP	\$10.0
HONEY BUTTER CHICKEN AND BISCUIT FAMILY MEAL	
BANANA NUT BREAD LOAF	\$6.2
DOUBLE ENTRÉE FAMILY MEAL DEAL	\$84.3

# Bob Evans Menu



<b>FAMILY SIZE MASHED POTATOES GRAVY</b>	<b>\$16.2</b>
<b>FAMILY SIZE MACARONI CHEESE</b>	<b>\$16.2</b>
<b>FAMILY SIZE GREEN BEANS WITH HAM</b>	<b>\$16.2</b>
<b>FAMILY SIZE BUTTERED CORN</b>	<b>\$16.2</b>
<b>FAMILY SIZE SEASONAL FRESH FRUIT</b>	<b>\$16.2</b>
<b>FAMILY SIZE STEAMED BROCCOLI</b>	<b>\$16.2</b>
<b>FAMILY SIZE CARROTS</b>	<b>\$16.2</b>
<b>FAMILY SIZE BREAD CELERY DRESSING</b>	<b>\$16.2</b>
<b>FAMILY SIZE BOB EVANS SIGNATURE COLESLAW</b>	<b>\$16.2</b>

<b>CINNA-BISCUITS PLATTER</b>	<b>\$31.0</b>
<b>SOUTHWEST AVOCADO CHICKEN FAMILY MEAL</b>	
<b>THREE-COURSE FAMILY MEALS</b>	
<b>FAMILY SIZE CHICKEN-N-NOODLE SOUP</b>	<b>\$10.0</b>
<b>COUNTRY-FRIED STEAK FAMILY MEAL</b>	
<b>FAMILY SIZE SAUSAGE GRAVY</b>	<b>\$16.2</b>
<b>HAND-BREADED FRIED CHICKEN FAMILY MEAL</b>	
<b>SLOW-ROASTED TURKEY DRESSING FAMILY MEAL</b>	
<b>FORK-TENDER POT ROAST FAMILY MEAL</b>	

# Bob Evans Menu



## Bob Evans

4308 Crain Hwy, 20716, Bowie,  
US, United States

### Opening Hours:

Monday 07:00-20:40  
Tuesday 07:00-20:40  
Wednesday 07:00-20:40  
Thursday 07:00-20:40  
Friday 07:00-20:40  
Saturday 07:00-20:40  
Sunday 07:00-20:40

Made with [menulist.menu](https://menulist.menu)

 gallery image