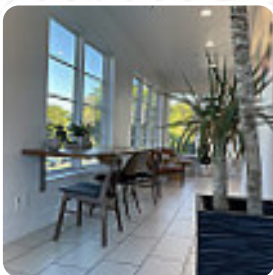




## ***District Coffee Co. Menu***

<https://menulist.menu>

206 N 200 W #1, 84103, Salt Lake City, US, United States  
+18019068183 - <http://districtcoffeeco.square.site/>



Here you can find the [menu](#) of **District Coffee Co.** in [Salt Lake City](#). At the moment, there are 16 menus and drinks on the card. You can inquire about *seasonal or weekly deals* via phone. What [User](#) likes about District Coffee Co.:

great experience! I traveled a lot and I have a basic caramel latte, it was one of the best I ever had! it was so good if I lived closer, I wouldn't have any money! I would drink coffee all the time! I had the barista with the green and yellow hairs and he was friendly and made a great job with my drink. I recommend! [read more](#). The restaurant is accessible and can therefore also be used with a wheelchair or physiological disabilities. What [User](#) doesn't like about District Coffee Co.:

Ordered a decaf latte. For a 7 dollar latte, I expect a bit more finesse in the espresso making process, but it's a small space, and they can't necessarily fit so many grinder options. They rightfully prioritize their caffeinated espresso. There are definitely smaller options for espresso grinders, especially for low throughput and single dosing, but I can't be too upset. Just know that about their decaf espresso. Ul... [read more](#). District Coffee Co. from Salt Lake City is a **snug café**, where you can enjoy a snack or cake with a steaming coffee or a hot chocolate, Likewise, the guests of the restaurant prefer the extensive variety of various coffee and tea specialities that the establishment provides. If you decide to come for breakfast, you are offered a tasty brunch.

# *District Coffee Co. Menu*



## *Süßes*

MUFFINS

## *Dessert*

BLUEBERRY MUFFIN

## *Spirits*

AMERICANO

## *Pop Tarts*

BLUEBERRY

## *Condiments*

SYRUP

## *Hot Drink*

HOT CHOCOLATE

## *Drinks*

DRINKS

## *Non alcoholic drinks*

CHAI

LEMON

## *Ingredients Used*



CARAMEL

MILK

CHOCOLATE

## *Coffee*

ESPRESSO

DECAF

COFFEE

CARAMEL LATTE

# *District Coffee Co. Menu*



## *District Coffee Co.*

206 N 200 W #1, 84103, Salt  
Lake City, US, United States

### **Opening Hours:**

Monday 06:30 -20:00  
Tuesday 06:30 -20:00  
Wednesday 06:30 -20:00  
Thursday 06:30 -20:00  
Friday 06:30 -20:00  
Saturday 08:00 -20:00  
Sunday 08:00 -20:00

Made with [menulist.menu](https://menulist.menu)

