

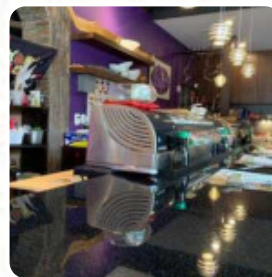


Katana Sushi Menu

<https://menulist.menu>

845 S Montford Ave, Baltimore, United States

+14105227100,+14105637437 - <https://www.katanabaltimore.com/>



The menu of Katana Sushi from Baltimore includes 88 dishes. On average, **dishes or drinks on the menu** cost about \$9.9. The categories can be viewed on the menu below. What User likes about Katana Sushi: I got the Choose 3 Rolls and Choose 2 Rolls. Fresh, nicely made sushi, warm miso soup,!packaged very well, came with utensils and lots of soy sauce, no complaints! read more. Katana Sushi The brilliant Asian fusion cuisine will thrill you, the exquisite mix of familiar flavors and exciting new creations will amaze!, among the specialties of this restaurant are especially the Maki and Inside-Out. Katana Sushi focuses on a lot of fresh vegetables, fish and meat in its easily digestible Japanese cuisine, On the menu there are also several **Asian meals**.

Katana Sushi Menu



Main courses

SUSHI

Extras

GINGER

Sandwiches

CALIFORNIA SANDWICH

Side dishes

STICKY RICE

Starters & Salads

SHRIMP

Appetizer

TEMPURA

Dessert

FRIED ICE CREAM

Beilagen und Extras

SOJASAUCE

Japanese specialties

MISO SOUP

Asian specialties

EDAMAME

Special Sushi

VEGETABLE TEMPURA

Fried Rice

FRIED RICE

Soups & Salads

B7. SQUID SALAD \$7.9

Munchies

SHRIMP TEMPURA

Soup and Salad

B3. SEAWEED SALAD \$6.0

Appetizers and Salad

A1. MISO SOUP \$2.5

Popular Items

G23. SALMON AVOCADO \$7.5

Sushi Bar Appetizers

C15.FIRE OCEAN \$18.6

Tasty Add Ons

SWEET POTATO TOTS \$7.0

Maki Roll - Chef Special Roll

FIRE CRACKER ROLL \$16.6

Salads

B8. GRILL CHICKEN SALAD \$13.0

B8. GRILL SHRIMP SALAD \$14.0

Katana Sushi Menu



Soup

A2. ONION SOUP	\$2.5
A3. SEAFOOD SOUP	\$9.5

Kitchen Appetizers

D9. CHICKEN SKEWER (2)	\$7.0
D10. BEEF SKEWER (2)	\$8.0

Sushi and Sashimi

E5. SMOKED SALMON	\$6.3
E10. WHITE TUNA	\$6.0
E22. TOBIKO	\$7.0
E24. MACKEREL	\$6.0

Ramen Noodles

N1. TONKOTSU RAMEN (PORK BROTH)	\$14.0
N3. MISO RAMEN (PORK BROTH)	\$14.0
N2. SPICY RAMEN (PORK BROTH)	\$14.0
N5. VEGETABLE RAMEN (VEG. BROTH)	\$13.8

These types of dishes are being served

FISH
ICE CREAM
SOUP
SALAD

Salad

B5. KANI SALAD	\$7.8
B2. AVOCADO SALAD	\$8.0
B1. GREEN SALAD	\$3.0

B4. SALMON SKIN SALAD	\$7.5
B6. COMBINATION SEAFOOD SALAD	\$17.0

New Rolls

ROMANTIC DATE ROLL(M,E,S)	\$18.9
CRISPY ROLL (M,E)	\$16.8
DOUBLE SPICY ROLL (M,E)	\$18.0
SNOW WHITE (MANGO)	\$15.6
TOP RED (M,E)	\$16.0
SUPERMAN ROLL (SWEET CHILL)	\$15.6

Regular Roll and Hand Roll

G18. SPICY TUNA WITH CRUNCH	\$7.3
G9. CALIFORNIA ROLL	\$7.3
G19. SPICY SALMON WITH CRUNCH	\$7.3
G12. PHILLY ROLL	\$7.0
G10. ALASKAN ROLL	\$7.5
G1. AVOCADO ROLL	\$5.5

Ingredients Used



CHICKEN
MANGO
TRAVEL

KALE
MISO
WE HAVE
VEGETABLE
TERIYAKI
CHICKEN TERIYAKI
AVOCADO
EEL

Katana Sushi Menu



Sushi Bar Appetizer

C8. WATER FALL	\$16.8
C9. SEXY JALAPENO	\$13.0
C2. SPICY TUNA TARTAR	\$11.5
C1. SPECIAL KANI SU	\$10.5
C3. LOBSTER TARTAR APPETIZER	\$15.5
C4. TAKO SU	\$14.8
C5. IDAKO	\$9.0
C6. YUZU TUNA	\$16.8
C7. SCREAMING SALMON	\$16.3
C10. YELLOW TAIL AMAZING	\$17.0
C12. MARYLAND CRAB SANDWICH	\$18.6
C13. MOON CAKE	\$15.8
C14. FRUITY NINJA	\$16.6

Kitchen Appetizer

D4. GYOZA	\$6.3
D17. CRAB RANGOON	\$6.9
D6. EDAMAME	\$6.3
D3. SHUMAI	\$6.3
D19. (NEW)KARAGE FRIED CHICKEN BITES	\$7.8
D7. SPICY EDAMAME	\$8.0
D12. SHRIMP TEMPURA	\$8.8
D18. MANGO STICKY RICE	\$6.9
D5. YASAI GYOZA	\$6.3
D20. (NEW)CRISPY BATTERED GREEN BEANS	\$7.8
D16. TAKOYAKI	\$6.9
D8. VEGETABLE TEMPURA	\$7.0
D1. HARU MAKI	\$5.0
D2. AGE TOFU	\$5.5

D11. CHICKEN TEMPURA	\$8.8
D13. IKA MARUYAKI	\$15.5
D14. FRIED SOFT SHELL CRAB	\$12.0
D15. HAMACHI KAMA	\$13.5

Sushi or Sashimi (2 Pieces)

E1. SALMON (SAKE)	\$6.3
E2. TUNA (MAGURO)	\$6.3
E8. SALMON ROE (IKURA)	\$8.3
E3. YELLOWTAIL (HAMACHI)	\$6.3
E19. FRESH WATER EEL (UNAGI)	\$7.5
E14. SCALLOP (HOTATE)	\$7.5
E7. OCTOPUS (TAKO)	\$7.0
E13. SHRIMP (EBI)	\$6.5
E17. SQUID (IKA)	\$6.0
E6. RED SNAPPER (TAI)	\$6.0
(NEW)FATTY TUNA 2PCS	\$16.6
(NEW)FATTY TUNA 4PCS	\$26.0
E11. SMELT EGGS (MASAGO)	\$6.5
E12. CRAB (KANI)	\$5.0
E15. SWEET SHRIMP (AMA EBI)	\$9.0
E16. RED CLAM (HOKKIGAI)	\$6.3
E20. EGG (TAMAGO)	\$4.5
E21. QUAIL EGGS (4 PIECES)	\$5.0

Katana Sushi Menu



E23. TOFU SKIN (INARI)

\$5.0

Katana Sushi Menu



Katana Sushi

845 S Montford Ave, Baltimore,
United States

Opening Hours:

Monday 11:00-21:25
Tuesday 11:00-21:25
Wednesday 11:00-21:25
Thursday 11:00-21:25
Friday 11:00-22:25
Saturday 11:00-22:25
Sunday 12:00-21:10

Made with menulist.menu

