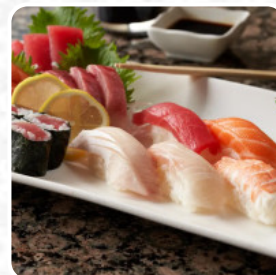
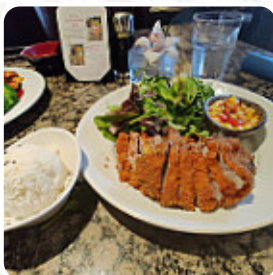




## ***Fins Menu***

<https://menulist.menu>  
 240 Cambridge St MA 2114, Boston, United States  
 +16172272277 - <http://www.finsboston.com/>



The restaurant from Boston offers **217** different dishes and drinks on the menu at an average price of \$12.9.

What [User](#) likes about Fins:

beautiful local [sushi](#) restaurant that makes managing business, but has table service. you seetangsalat with lemon wedge is fresh and bright and nitiriri was the same. roll are great, all good! the personal is beautiful and one of our visits to beacon hill near mgh. [read more](#). The restaurant and its premises are wheelchair accessible and thus usable with a wheelchair or physical disabilities. What [User](#) doesn't like about Fins:

I asked for an extra Shiso leaf, I was grateful for the record of 8 leaves, but surprised to pay \$2 for them. I had only 4 pieces sashimi shrug. . the quality of the fish was decent. the salad was very wet, but the rangoon looked like they were well roasted. [read more](#). At Fins from Boston, scrumptious [sushi](#) (e.g., Nigiri and Inside-Out) is prepared for you, along with numerous other variations, always fresh with ingredients like fish, vegetables and meat, and a lot of fresh vegetables, fish and meat are used to cook *healthy Japanese meals*. After the meal (or during it), you have the opportunity to still relax at the bar with a **alcoholic or non-alcoholic drink**.

# Fins Menu



## Non alcoholic drinks

LEMON

## Soups

CHICKEN DUMPLING SOUP \$6.0

## 10 most popular

SALMON AVOCADO \$8.0

## Main courses

SUSHI

## Sushi Nigiri Maki

PHILADELPHIA MAKI \$7.0

## Maki

CATERPILLAR MAKI \$12.0

## Sushi Don

TEKKA DON \$20.0

## Extras

SUSHI RICE \$4.0

## Menus

TUNA COMBO \$17.0

## Gunkan

SPICY SALMON \$8.0

## Grill

TERIYAKI VEGETABLE WITH TOFU \$16.0

## Chicken

CHICKEN KATSU \$18.0

## Insalate

AVOCADO SALAD \$7.0

## Maki Sushi

SPICY SCALLOP ROLL \$14.0

## Inside Out

TUNA AVOCADO \$8.0

## Ramen

DUCK SOBA NOODLES SOUP \$16.0

## Main Course

GYOZA \$7.0

## Tempura Rolls

SPICY TUNA TEMPURA ROLL \$14.0

## Inside Out Makis

HAWAII MAKI \$13.0

## Gourmet Special

SABA SHIOYAKI \$10.0

## Verschiedene Speisen - Ab 18:00 Uhr

SASHIMI SALAD \$11.0

# Fins Menu



## Makimono

HANABI MAKI \$19.0

## Sesam Maki

OCEAN MAKI \$13.0

## Main

GRILLED SIRLOIN STEAK \$22.0

## Maki Roll

CRAZY MAKI \$10.0

## Appetizer

GRILLED VEGETABLE ROLL \$6.0

## Water

SODA

## Special Roll

FIRE MAKI \$14.0

## Side Order

BROWN RICE \$4.0

## Sonstiges

SASHIMI

## Fisch-Rollen

GRILLED SALMON ROLL \$8.0

## Spezial Roll

SUSHI PIZZA \$14.0

## Fisch & Caviar Maki

RAINBOW MAKI \$12.0

## Japanese specialties

MISO SOUP \$3.5

## Beverages

SARATOGA SPARKLING WATER

## Lunch menu

TUNA POKE BOWL \$19.0

## Seafood Dishes

FRIED CALAMARI \$10.0

## Inside-Out-Maki

BOSTON ROLL \$8.0

## Soups and Salads

MIXED FIELD GREENS \$7.0

## Special Sushi

VEGETABLE TEMPURA \$10.0

## Soup & Salads

SPICY SEAFOOD MISO SOUP \$9.0

## Hot und Rocket Style

CRUNCHY ROLL \$17.0

## Sides and Starters

SPICY WINGS (6PCS) \$9.0

# Fins Menu



## Lunch from Sushi Bar - (11 AM - 4 PM)

VEGETARIAN MAKI COMBO \$16.0

## Popular Items

MANGO MILK TEA WITH BUBBLE \$5.5

## Dinners

SPICY COMBO \$20.0

## Sushi Entrées

SUSHI AND SASHIMI COMBO \$30.0

## Sushi Bar Entrees

CHIRASHI \$19.0

## Hot Subs

GRILLED CHICKEN TERIYAKI \$18.0

## From Kitchen

CRAZY SOFT SHELL CRAB \$12.0

## Draft Beers

SAM ADAMS SEASONAL

## Sushi or Sashimi A La Carte

FRIED BEAN CURD (INARI) \$5.0

## Hot Appetizer

PAN SEARED SEA SCALLOP \$22.0

## Nigiri Sushi and Sashimi

SWEET SHRIMP (AMAEBI) \$6.0

## Sushi Boats

SMALL BOAT \$56.0

## Fusion Sushi

MACKEREL (SABA) \$5.0

## Daily Lunch Specials

MAINE LOBSTER ROLL \$16.0

## Soba

COLD ZARU SOBA \$10.0

## House Entrées

CRISPY SOLE FISH \$21.0

## Build Your Own Poke Bowl

VEGETABLE POKE BOWL \$17.0

## Sushi Sashimi Combo

SALMON COMBO \$17.0

## Speciality Rolls

GARDEN ROLL \$9.0

## Main Stir Fry Dishes

SIZZLING PLATE \$22.0

## Teriyaki Dinner

ATLANTIC SALMON TERIYAKI \$19.0

# Fins Menu



## Seasonal Drinks

THAI MILK TEA WITH BUBBLE \$5.5

## Roku Signature Style Sushi / Sashimi

SHRIMP (EBI) \$6.0

## Maki Roll / Hand Roll

SALMON CUCUMBER \$8.0

## Sushi Boat

MAKI BOAT \$59.0

## Vegetable Maki

IDAHO MAKI \$6.0

## Raw Roll (Rolls or Hand Roll)

TUNA CUCUMBER \$8.0

## Sushi (Nigiri)

TOBIKO WITH QUAIL EGG \$8.0

## Inside Out Rolls - Sushi

TUNA ROLL \$7.0

## Cooked Maki

UNA-AVO OR CUCUMBER \$8.0

## Classic Entree

PORK KATSU \$18.0

## Fish & Seafood

MISO SALMON \$21.0

## Vegetarian: Rice & Noodles

VEGETABLE FRIED RICE \$11.0

## Our Chef's Specials

MEXICAN ROLL \$11.0

## Roll & Hand Roll

SPIDER MAKI \$10.0

## Urmaki

SPICY YELLOWTAIL \$8.0

## Uncooked Nigiri (2 Pcs), Sashimi (3 Pcs)

BASS (SUZUKI) \$6.0

## SUSHI-CLASSICS-

AVOCADO MAKI \$5.0

## Maki Roll - Chef Special Roll

NARUTO \$9.0

## Bún Additions

FRIED SPRING ROLL \$7.0

## Sushi and Sashimi (no substitutions)

LARGE BOAT \$79.0



# Fins Menu



## Restaurant Category

VEGAN

## Cooked Nigiri (2 Pcs), Sashimi (3 Pcs)

GRILLED EEL (UNAGI) \$7.0

## Nigiri

CRAB STICK (KANIKAMA) \$5.0

IKURA WITH QUAIL EGG \$8.0

## Donburi

BEEF DON \$16.0

UNAJU DON \$20.0

## Side dishes

UNAGI FRIED RICE \$14.0

VEGGIE BOAT \$35.0

## Fish

SMOKED SALMON \$6.0

SALMON ROLL \$7.0

## Nigiri Sushi

SALMON ROE (IKURA) \$7.0

UNI WITH QUAIL EGG \$9.0

## Starters

KARA-AGE \$6.0

CRISPY DUCK BREAST \$21.0

## Noodles

CHASHU MISO RAMEN IN SOUP \$16.0

GRILLED EEL RAMEN IN SOUP \$17.0

## Tempura

SEAFOOD DELUXE TEMPURA \$25.0

OYSTER WITH SCALLOP KATSU \$20.0

## Special Maki

RED SOX MAKI \$16.0

SCORPION MAKI \$11.0

## Small Plates

SHRIMP VEGETABLE TEMPURA \$10.0

SHRIMP AND VEGETABLE  
TEMPURA \$20.0

## Poke Bowl

SALMON POKE BOWL \$19.0

YELLOWTAIL POKE BOWL \$19.0

## House Entree

FANCY SAKE DON \$20.0

MAKI DELUXE \$19.0

## Sushi / Sashimi A la Carte

OCTOPUS (TAKO) \$6.0

SEA URCHIN (UNI) \$8.0

## Sushi & Sashimi A la Carte

EGG (TAMAGO) \$5.0

# Fins Menu

FLYING FISH ROE (TOBIKO) \$7.0

## Sushi

CALIFORNIA MAKI \$7.0

SPICY TUNA ROLL

SUMMER ROLL \$15.0

## Soup

SALMON RICE WITH GREEN TEA BROTH \$6.0

CHERRY STONE CLAM SOUP \$6.0

BEEF DUMPLING SOUP \$6.0

## From Sushi Bar

TUNA TATATKI \$11.0

WHITE TUNA CARPACCIO \$11.0

TRI COLOR SASHIMI ROLLS \$13.0

## Grill & Teriyaki

WILD CAUGHT WAHOO SALT AND PEPPER \$19.0

WILD CAUGHT WAHOO TERIYAKI \$19.0

ATLANTIC SALMON WITH SALT PEPPER \$19.0

## Uncategorized

YELLOWTAIL AND SCALLION ROLL \$7.0

YELLOWTAIL SERRANO \$11.0

SNOW MOUNTAIN MAKI \$15.0

## Salads



SEAWEED SALAD \$6.0

SPICY SEAFOOD SALAD \$8.0

HOUSE SALAD \$6.0

SALAD

## Cooked

FIN'S SPECIAL ROLL \$8.0

SPICY SEAFOOD MAKI \$8.0

HOUSE DRAGON MAKI \$15.0

ROCK IN ROLL \$12.0

## Ingredients Used

WHITE RICE \$3.0

MISO

WE HAVE

TRAVEL

*These types of dishes are being served*

SPICY TUNA \$8.0

FISH

SALAD

SOUP

## Rice

SPICY SEAFOOD BASIL FRIED RICE \$15.0

BEEF BASIL FRIED RICE \$14.0

SHRIMP AND CHICKEN FRIED RICE \$13.0

SPICY KIMCHI VEGETABLE FRIED RICE \$11.0

SALMON SOY BEAN PODS FRIED RICE \$12.0



# Fins Menu



## Beer

AMSTEL LIGHT HEINEKEN

BUDWEISER ANCHOR LIBERTY ALE

KIRIN ICHIBAN (JAPAN) SAPPORO LIGHT (JAPAN)

ASAHI (JAPAN) SAPPORO PREMIUM (JAPAN)

SAPPORO SILVER (JAPAN-22OZ.)

## Sushi Entree

BLUE FIN TORO COMBO 1 \$32.0

BLUEFIN TORO COMBO 2 \$30.0

SUSHI REGULAR 12 PCS \$19.0

SUSHI DELUXE 16 PCS \$22.0

SASHIMI DELUXE 16 PCS \$29.0

## Red Wine

ANGELINE, MERLOT SONOMA, CA

ROBERT MONDAVI PRIVATE SELECT  
MERLOT CALIFORNIA

CELLAR NO. 8, CABERNET SAUVIGNON  
CENTRAL COAST, CALIFORNIA

CUPCAKE, CABERNET SAUVIGNON  
CENTRAL COAST, CALIFORNIA

ROBERT MONDAVI PRIVATE SELECT  
PINOT NOIR CALIFORNIA

CLOS DU BOIS, MERLOT ALEXANDER  
VALLEY, CALIFORNIA

## Sushi & Sashimi A La Carte

SQUID (IKA) \$6.0

SALMON (SAKE) \$6.0

TUNA (MAGURO) \$7.0

YELLOW TAIL (HAMACHI) \$7.0

SCALLOP (HOTATEGAI) \$7.0

FATTY TUNA (TORO)

\$13.0

## Signature Dish

COWBOY MAKI \$15.0

EASTERN MAKI \$14.0

CHRISTMAS MAKI \$15.0

FLAMINGO MAKI \$15.0

DOUBLE MATCH MAKI \$15.0

YELLOW FIN'S ROLL \$15.0

## Specail Maki From Chef

KING OF SPIDER \$18.0

STOPLIGHT SUSHI ROLL \$16.0

TAKUSAN MAKI \$17.0

FIN'S 3 MAKI \$17.0

FIN'S VOLCANO \$16.0

TORCH TORO MAKI \$20.0

## White wine

MATUA, SAUVIGNON BLANC  
MARIBOROUGH, NEW ZEALAND

STONECAP, RIESLING COLUMBIA  
VALLEY, WA

HANGTIME, CHARDONNY CALIFORNIA

WAKEFIELD PROMISED LAND  
CHARDONNY AUSTRALIA

MEZZACORONA, PINOT GRIGIO  
TRENTINO, ITALY

CLOS DU BOIS, PINOT GRIGIO  
CALIFORNIA

CLOS DU BOIS, CHARDONNY RUSSIAN  
RIVER, SONOMA RESERVE

## Noodle

TEMPURA NOODLES IN SOUP \$16.0



# Fins Menu

SPICY BEEF NOODLES IN SOUP	\$17.0
SEAFOOD NOODLES IN SOUP	\$17.0
VEGETABLE NOODLES IN SOUP	\$11.0
YAKI NOODLES WITH VEGETABLES	\$11.0
YAKI NOODLES WITH CHICKEN OR BEEF	\$14.0
YAKI NOODLES WITH SEAFOOD	\$16.0

## Bubble Tea

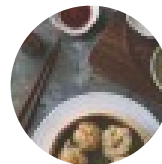
MILK TEA WITH BUBBLE	\$5.5
MATCHA GREEN TEA WITH BUBBLE	\$5.5
LYCHEE LEMON OOLONG BUBBLE TEA	\$6.5
GINGER LEMON DELIGHT BUBBLE TEA	\$6.6
SWEET CITRUS PLUM BUBBLE TEA	\$6.5
BROWN SUGAR MILK TEA WITH BUBBLE TEA	\$7.5
OREO SLUSH MILK TEA WITH BUBBLE	\$7.5

## Sake

GEKKEKIAN SAKE
FUKI PLUM SAKE
GEKKEKIAN DRAFT SAKE (375ML)

KIKU-MASAMUNE TARUSAKE (300ML)
TOZAI LIVING JEWEL JUNMAI (300ML)
KIKU-SUI JUNMAI GINJYO (300ML)
SHIRAKABEGURA TOKUBETSU JUNMAI (300ML)
SATO NO HOMARE PRIDE OF THE VILLAGE JUNMAI GINJYO (300ML)

## Appetizers



SCALLION PANCAKE	\$8.0
STEAMED EDAMAME	\$6.0
SHUMAI	\$7.0
FRESH SPRING ROLL	\$7.0
B.B.Q. SQUID WITH ONION	\$11.0
AGEDASHI TOFU	\$6.0
TAKOYAKI	\$7.0
PORK BELLY BUNS (2PCS)	\$8.0
SPICY LOBSTER RANGOON	\$8.5
GRILLED EGGPLANT (2PCS)	\$8.0
SNOW ONION CHICKEN	\$10.0
SASHIMI APPETIZERS	\$12.0
FRENCH SALMON TARTAR	\$10.0
CUCUMBER AVOCADO MAKI	\$6.0
FASHION MAKI	\$9.0
ALASKAN MAKI	\$8.0

# Fins Menu



## Fins

240 Cambridge StMA 2114,  
Boston, United States

Made with [menulist.menu](#)

**Opening Hours:**  
Monday 11:30-22:00  
Tuesday 11:30-22:00  
Wednesday 11:30-22:00  
Thursday 11:30-22:00  
Friday 11:30-22:00  
Saturday 11:30-22:00  
Sunday 12:00-22:00

