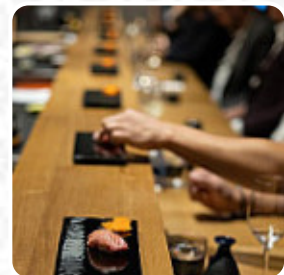




## ***Soseki Menu***

<https://menulist.menu>

955 W. Fairbanks Ave., 32789 Winter Park, United States Of America  
**+14078532791 - <https://www.sosekifl.com/>**



As soon as we have [a meal plan](#) for Soseki from Winter Park, we will publish it here. In the meantime, feel free to take a look at the meal plans in the surrounding area. Or help us by **publishing an overview of the dishes and drinks here**. What [Don Anders](#) likes about Soseki:

We had an amazing team dinner at Soseki. Probably the best sushi I've ever had. Two of the people in our party are self-described "picky" eaters and one person who didn't even like sushi, but everyone loved all of the dishes. Benjamin was very hospitable and even put together a Sake only pairing menu. Soseki is absolutely deserving of their Michelin Star [read more](#). The premises on site are wheelchair accessible and can also be used with a wheelchair or physical disabilities, and there is complimentary WLAN. What [Synead P](#) doesn't like about Soseki: Ambience 10/10! Service 10/10! FOOD: 5/10 The food quality was subpar. Some fish had a strong fishy taste, and the side dishes were average. Compared to other Michelin omakase experiences I've had, it just lacked the wow factor. Don't get me wrong it was GOOD. (considering it was \$300, it better be good), BUT it just didn't leave me with the desire to revisit. [read more](#). Traditional menus are prepared in the kitchen of Soseki in Winter Park with original **Asian spices fine**, the brilliantly inventive fusion of an assortment of components guarantees customers an unforgettable taste experience of this expertly prepared *fusion cuisine*. Soseki uses a lot of fresh vegetables, fish and meat for its easily digestible Japanese cuisine. Furthermore, the customers love the inventive combination of different menus with new and partially experimental products - a nice example of successful Asian Fusion.

# *Soseki Menu*



## *Salads*

LETTUCE

## *Non alcoholic drinks*

TONIC

## *Alcoholic Drinks*

CHARDONNAY

## *Appetizers*

NUGGETS

## *Main courses*

SUSHI

## *Chicken*

CHICKEN NUGGETS

## *Spirits*

MARTINI

## *Restaurant Category*

FRENCH

## *Drinks*

SAKE

DRINKS

*These types of dishes are  
being served*

SALAD

FISH

## *Ingredients Used*

MISO

TRAVEL

CHICKEN

# *Soseki Menu*



## *Soseki*

955 W. Fairbanks Ave., 32789  
Winter Park, United States Of  
America

**Opening Hours:**  
Wednesday 07:00 -22:00  
Thursday 05:30 -22:00  
Friday 05:30 -22:00  
Saturday 05:30 -22:00

Made with [menulist.menu](https://menulist.menu)

