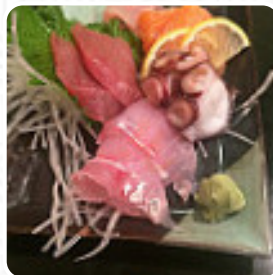




Sagami Menu

<https://menulist.menu>

3850 Barranca Pkwy Suite B, Irvine, CA 92606, United States
+19498578030 - <https://gindacosagami.com/>



サッポロ (北海道) ひとくちまぐろ	sashimi	\$7.90
Somno Pike mackerel	sashimi	\$19.95
のどくろ(真鯛) 真鯛刺身	sushi	\$14.00
Redthroat Black throat perch	sashimi	\$30.00
本まぐろ中トロ(赤身)	sashimi	\$12.95
Bluefin Toro from Japan	sashimi	\$29.95
モハ(塩漬) 塩漬モハ	sushi	\$14.00
Hiruzai Giant clam	sashimi	\$30.00
生ワフ(北海道) 生ワフ	sashimi	\$7.00
Wasafoto Fresh raw octopus	sashimi	\$16.00
キングサーモン 王冠サーモン	sashimi	\$7.00
Kiro salmon	sashimi	\$16.00
天然釣り鮭(真味) 天然釣り鮭	sashimi	\$7.50
All White ranch mackerel	sashimi	\$16.00

A **comprehensive menu** of Sagami from Irvine covering all 15 menus and drinks can be found here on the food list. For *changing offers*, please get in touch via phone or use the contact details provided on the website. What [User](#) likes about Sagami:

A unique place to enjoy a lunch or dinner. The staff provides a wonderful dining experience while the owner has been making dishes with their own special touch. All of this helps to create the best Japanese [sushi](#) restaurant around. With plenty of options both for the sit down menu or at the [sushi](#) bar, you can come back here time and again and always leave happy just as our family has done for the past 10 years. The p... [read more](#). What [User](#) doesn't like about Sagami:

All are dirty in serving. I don't think they're made by Japanese. The list should be checked. The service is also below average. It is not worth, except for a restaurant where you can enjoy Japanese dishes prepared by Japanese people. [read more](#). In the Sagami from Irvine, using a lot of fresh vegetables, fish and meat, easy-to-digest, delicious Japanese meals are prepared, on the menu there are also a lot of **Asian menus**. The kitchen of the Sagami is also familiar with many [international meals](#), Also, the drinks menu at this place is exceptional and offers a significant and comprehensive assortment of both local and international beers, which are definitely worth a try.

Sagami Menu



Eggs & Pancakes

OMELETTE

Main courses

SUSHI

Extras

DIPPING SAUCE

Sandwiches

CALIFORNIA SANDWICH

Sonstiges

SASHIMI

Sushi Bar Entrees

CHIRASHI

*These types of dishes are
being served*

FISH

SOUP

Ingredients Used

MEAT

EEL

WHITE RICE

TRAVEL

MACKEREL

CHICKEN

ONION

Sagami Menu



Sagami

3850 Barranca Pkwy Suite B,
Irvine, CA 92606, United States

Opening Hours:

Monday 11:30 -21:30
Tuesday 11:30 -21:30
Wednesday 11:30 -21:30
Thursday 11:30 -21:30
Friday 11:30 -22:00
Saturday 11:30 -22:00
Sunday 11:30 -21:30

Made with [menulist.menu](https://www.menulist.menu)

ササギ (北海道) 45g 本庄人刺	sushi	\$7.50
Sorimi Pike mackerel	sashimi	\$19.95
のどくろ(真味) 真味真味のどくろ	sushi	\$15.00
Kurodaro Black throat perch	sashimi	\$30.00
本まぐろ中トロ(巻物) 一貫付	sushi	\$12.95
Bueno Toro from Japan	sashimi	\$25.95
モル寝(巻物) 真味真味モル寝	sushi	\$15.00
Mitsui Giant clam	sashimi	\$30.00
生タコ(北海道) 生タコ(北海道)	sushi	\$7.00
Nanafoko Fresh raw octopus	sashimi	\$14.00
キングサーモン 王宮のサーモン	sushi	\$7.00
King salmon	sashimi	\$14.00
天然釣魚(真味) 天然釣魚	sushi	\$7.50
AI Wild spanish mackerel	sashimi	\$15.00