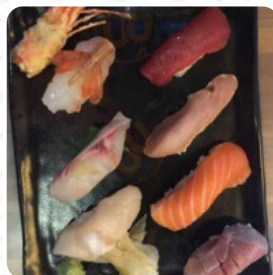


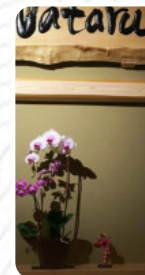


## Wataru Menu

<https://menulist.menu>  
 2400 NE 65th St, Seattle, United States  
 +12065252073 - <http://wataruseattle.com/>



ise 10 pieces  
 lomae style 10 pieces are prepared by soy dashi zuke, aji  
 esami marinade, red vinegar pickled, kelp wrap and nikiri  
 ip.  
 in  
 hirashi  
 himi on top of sushi rice mixed with shitake mushroom or  
 paid pickup  
 in  
 ginal Futomaki  
 yle Big Fat Roll!! Blue fin tuna zuke, Otoro, King salmon t



Order here  
<http://www.wataruseattle.com/>  
 Sushiorakase 10 pieces  
 Traditional Edo-mae style 10 pieces  
 By soy dashi zuke, apple or straw on  
 osami marinade, red vinegar pickled  
 and nikiri seared. Prepaid pickup  
 \$40 per person  
 Premium Chirashi  
 Assorted sashimi on top of sushi rice  
 shitake mushroom and Anko sea  
 pickup  
 \$40 per person  
 Wataru Original Futomaki  
 Traditional style Big Fat Roll!! Blue  
 Otoro, King salmon or rockfish, Ohi  
 abasara bone or traditional, Bunsu  
 style egg and yuzo. Prepaid pickup  
 \$38 per person

A comprehensive [menu](#) of Wataru from Seattle covering all 15 menus and drinks can be found here on the food list. For changing offers, please get in touch via phone or use the contact details provided on the website.

What [d](#) likes about Wataru:

Wataru is amazing. We do the sushi bar, reservations and \$100 deposit are needed but absolutely worth it. Served fish from different areas, they explain everything and cut it up for you. It can definitely be pricey, but some of the best sushi I've had. When we visit from California we always stop here [read more](#). The restaurant is accessible and can therefore also be used with a wheelchair or physical limitations. In Seattle, traditional courses are prepared in the kitchen of Wataru with typical *Asian spices fine*. Furthermore, the visitors love the inventive combination of different dishes with new and partially experimental ingredients - a nice example of successful **Asian Fusion**. After the meal (or during it), you can still relax at the bar with a alcoholic or non-alcoholic drink. Also, the drinks menu at this place is exceptional and offers a significant and varied diversity of both local and international beers, which are definitely worth a try.

# ***Wataru Menu***



## ***Süße Desserts***

CHOCOLATE MOUSSE

## ***Extras***

WASABI

## ***Sandwiches***

CALIFORNIA SANDWICH

## ***Sonstiges***

SASHIMI

## ***Omlette***

TAMAGO

## ***Main courses***

SUSHI

CRAB

***These types of dishes are  
being served***

FISH

SALAD

## ***Ingredients Used***

WE HAVE

MISO

CHOCOLATE

TRAVEL

SCALLOP

SALMON

# Wataru Menu



## Wataru

2400 NE 65th St, Seattle, United States

**Opening Hours:**  
Wednesday 07:30 -22:00  
Thursday 07:30 -22:00  
Friday 07:30 -22:00  
Saturday 07:30 -22:00  
Sunday 04:30 -22:00

Made with [menulist.menu](https://menulist.menu)

 gallery image

