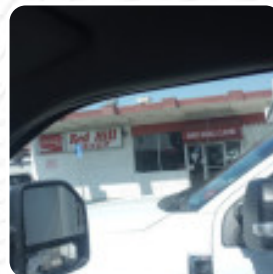
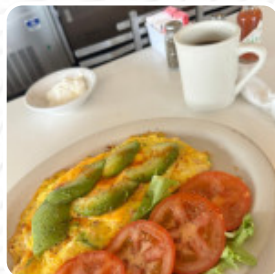




Red Hill Cafe Menu

<https://menulist.menu>
420 E Dyer Rd, Santa Ana, United States
(+1)7149570605



Here you can find the menu of Red Hill Cafe in Santa Ana. At the moment, there are **15** meals and drinks on the card. You can inquire about **changing offers** via phone. What [User](#) likes about Red Hill Cafe: Best Central American Breakfast Centre in Santa Ana. It is an inconspicuous small café with excellent food and charming local service. They make all classics and some great [Mexican](#) breakfast options. Your hash brown is too good. The prices are great and they take cards. Go here and support tense local Orange County business. [read more](#). The restaurant and its premises are wheelchair accessible and thus usable with a wheelchair or physiological disabilities. What [User](#) doesn't like about Red Hill Cafe:

My burgers and onion rings were served cold. My wife beef diving sandwich had a strange color and no taste. Much like cardboard. The ambience was beautiful and the waitress quickly corrected my onion rings. But too fast. I think the cook removed her from the plate and left her in the deep frying to heat up. My food was sent back and then returned in less time than I needed to go to the bathroom. It's obvious. Probabl... [read more](#). Perfectly pairing with the dishes of the restaurant are the fresh and delicious [juices](#) on the drinks menu, You can also discover tasty South American meals on the menu. If you decide to come for breakfast, you are offered a *hearty brunch*, The yummy sandwiches, small salads and other snacks are also suitable for a snack.

Red Hill Cafe Menu



Süße Desserts

CREPES

Sandwiches & Hot Paninis

BURRITO

Starters & Salads

FRIES

Breakfast

HASH BROWN

Spirits

AMERICANO

Breakfast Combos

BREAKFAST BURRITO

Coffee

COFFEE

Etc.

HOME FRIES

Restaurant Category

MEXICAN

***These types of dishes are
being served***

BURGER

Soft drinks

JUICE

ORANGE JUICE

Ingredients Used

EGG

BACON

EGGS

Red Hill Cafe Menu



Red Hill Cafe

420 E Dyer Rd, Santa Ana,
United States

Opening Hours:

Monday 06:00 -14:00
Tuesday 06:00 -14:00
Wednesday 06:00 -14:00
Thursday 06:00 -14:00
Friday 06:00 -14:00
Saturday 06:00 -13:00

Made with menulist.menu

 gallery image

