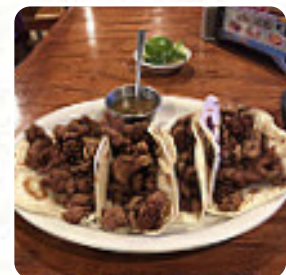




## ***Danny's Menu***

<https://menulist.menu>  
11096 Mines Rd, 78045, Laredo, US, United States  
+19567122145 - <https://dannysrestaurants.com/>



Here you can find the menu of Danny's in Laredo. At the moment, there are 15 courses and drinks on the card.

You can inquire about **changing offers** via phone. What [User](#) likes about Danny's: the image is not because of its justity. but the talpeño suppe togo. it was really delicious. - Yeah. the suppenbrühe was amazing. not too hot. the temperature was right. recommend the suppe. [read more](#). What [User](#) doesn't like about Danny's:

Did not like the food at all...vegetables were cold bake potato was not cooked all the way. My aunt's food was wrong and my grandkids cheeseburger was served without fries. Waitress was the only saving grace for the restaurant. [read more](#). In case you're hungry some seasoned South American cuisine, you're in the right place: tasty meals, roasted with fish, seafood, and meat, but also corn, beans, and potatoes are in the menu, and you can enjoy here tasty American menus like **Burger or Barbecue**. The guests also appreciate the *versatile, delicious [Mexican](#) cuisine*, whose traditional dishes are prepared with corn, beans and spicy chilies, here they serve a diverse brunch for breakfast.

# *Danny's Menu*



## *Süße Desserts*

CREPES

## *Eggs & Pancakes*

OMELETTE

## *Starters & Salads*

POTATOE CHIPS

## *Dessert*

FLAN

## *Spirits*

AMERICANO

## *Condiments*

SYRUP

## *Coffee*

COFFEE

## *Condiments and Sauces*

SAUCE

*These types of dishes are  
being served*

SOUP

## *Restaurant Category*

MEXICAN

DESSERT

## *Ingredients Used*

BACON

SAUSAGE

EGGS

CHICKEN

# Danny's Menu



## Danny's

11096 Mines Rd, 78045, Laredo,  
US, United States

### Opening Hours:

Monday 08:00 -21:30  
Tuesday 08:00 -21:30  
Wednesday 08:00 -21:30  
Thursday 08:00 -21:30  
Friday 08:00 -22:00  
Saturday 08:00 -22:00  
Sunday 08:00 -21:30

Made with [menulist.menu](https://menulist.menu)

 gallery image

