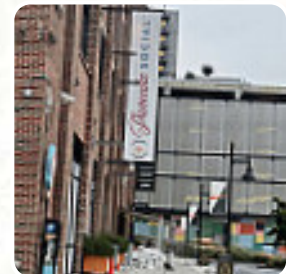




Pancake Social Menu

<https://menulist.menu>

675 Ponce De Leon Ave NE, 30308, Atlanta, US, United States
(+1)6786098696 - <http://pancakesocial.com/>



A **comprehensive menu** of Pancake Social from Atlanta covering all 15 courses and drinks can be found here on the menu. For seasonal or weekly deals, please get in touch via phone or use the contact details provided on the website. What [User](#) likes about Pancake Social:

great experience! we sat fast, although there was a 40-minute waiting time (within 10 minutes). our drinks were quickly released. Although they were busy, we immediately got our food. I ordered the bun and wad and french toast because I am greedy. my man ordered the lemons ricotta pancakes and beignets (one must try). the chicken was seasoned to perfection and the wadds tasted like fluffy funnel cake when that makes s... [read more](#).

In beautiful weather you can even eat and drink in the outdoor area. What [User](#) doesn't like about Pancake Social:

I just gave two stars because I really enjoyed my pancake. I ordered the pancake plate with strawberries (not got a picture) and my friend had the omelette and said it was very bland. but this review is strictly related to the eggs that were not sent back for the first time because they were cold and were brought back cold again. as the cheese is not even melted. I was also disappointed cold eggs served twice. [read more](#). With the extensive diversity of *coffee and tea specialties*, a visit to Pancake Social becomes even more attractive, You'll also find tasty bites, cake, simple snacks and chilled refreshments and hot drinks here. If you decide to come for breakfast, you are offered a **versatile brunch**, You'll find delicious South American meals also in the menu.

Pancake Social Menu



Süße Desserts

CREPES

Chicken

CHICKEN WAFFLES

Dessert

PANCAKE

Breakfast Menu

BREAKFAST POTATOES

Condiments

SYRUP

Breakfast Side Orders

GRITS

Drinks

DRINKS

Restaurant Category

FRENCH

***These types of dishes are
being served***

TOSTADAS

Toast

TOAST

FRENCH TOAST

Ingredients Used

EGGS

CHICKEN

POTATOES

BACON

Pancake Social Menu



Pancake Social

675 Ponce De Leon Ave NE,
30308, Atlanta, US, United States

Opening Hours:

Monday 08:00 -15:00
Tuesday 08:00 -15:00
Wednesday 08:00 -15:00
Thursday 08:00 -15:00
Friday 08:00 -15:00
Saturday 08:00 -15:00
Sunday 08:00 -15:00

Made with menulist.menu

