

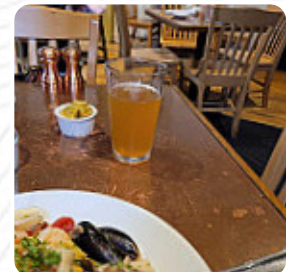
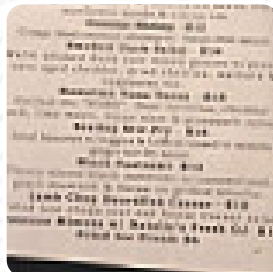
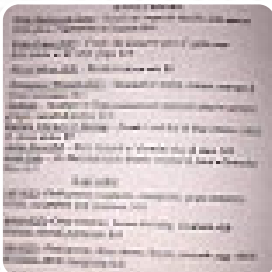


## Passports Menu

<https://menulist.menu>

110 Main St, Gloucester I-01930-5731, United States

+19782813680,+19782830870 - <https://www.doubleexposure.us>



Here you can find the [menu](#) of Passports in Gloucester. At the moment, there are **15** meals and drinks on the menu. You can inquire about [changing offers](#) via phone. What [User](#) likes about Passports: visit our first [Gloucester](#), and the maritime museum recommended passports' to us 3 girls, to lunch. we are so glad they made it! the fresh from the many popovers, were an unexpected and tasty leak! half Caesar salad was the best I ever had! the salmon and Albacore tacos were really good. the garnelenquesadilla was wonderful and the service was excellent, even on a busy Friday afternoon! so far the BEST food we had du... [read more](#). As a customer, you can use the WiFi of the restaurant free of charge, Depending on the weather, you can also sit outside and eat and drink. At Passports from Gloucester you can **taste delicious [vegetarian dishes](#)**, in which no animal meat or fish was processed, and you can look forward to the delicious classic [seafood](#) cuisine. Here they also grill South American fresh fish, meat, as well as beans and rice, The delicious sandwiches, small salads and other snacks are also suitable for a snack.

# Passports Menu



## *Main courses*

CRAB

## *Salad*

CAESAR SALAD

## *Breaded Special Rolls*

LOBSTER ROLL

## *Seafood and Grill Tacos*

FISH TACO

## *Restaurant Category*

AMERICAN

## *Salads*

TACOS

CAESAR SALAD

## *Appetizers*

CLAM CHOWDER

CRAB CAKE

## *Ingredients Used*

HADDOCK

SHRIMP

*These types of dishes are  
being served*

MEATLOAF

LOBSTER

BURGER

SALAD

# *Passports Menu*



## *Passports*

110 Main St, Gloucester I-01930-5731, United States

### **Opening Hours:**

Monday 09:00-14:30  
Tuesday 09:00-14:30  
Wednesday 09:00-14:30  
Thursday 09:00-14:30  
Friday 09:00-14:30

Made with [menulist.menu](https://menulist.menu)

