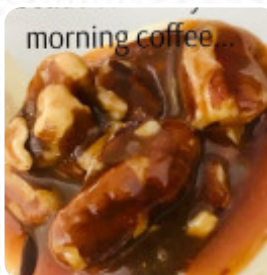




## *Espresso Yourself Coffee Cafe Menu*

<https://menulist.menu>

5351 Devonshire Ave, 63109, St. Louis, US, United States  
(+1)3143492277 - <http://www.espressoyourselfcafe.com/>



Here you can find the [menu](#) of Espresso Yourself Coffee Cafe in St. Louis. At the moment, there are 15 courses and drinks on the food list. You can inquire about changing offers via phone. What [User](#) likes about Espresso Yourself Coffee Cafe:

the girls at espresso yourself were very welcoming and seem to have an explosion with their business! I've never been there and everyone has been so courteous and nice! I have the cold brew and let me tell you that I was jazzed for the rest of my working day! it is a beautiful, cooler place and everyone seemed to enjoy sitting on the terrace (many from spaced seating) on a very nice day. I will be back to try the san... [read more](#). The diner and its rooms are wheelchair accessible and thus usable with a wheelchair or physiological limitations, Depending on the weather conditions, you can also sit outside and eat and drink. WLAN is available free of charge. What [User](#) doesn't like about Espresso Yourself Coffee Cafe:

Nothing special. I tried to order a coffee with a vanilla pump and the Barista didn't know what a pump was. The coffee itself was nothing from the ordinary. The baked goods were seriously missing. The Scones were not marked and accidentally ended ordering something with walnuts (not allergic friendly! . The bagels are not made in the house. Beautiful terrace outside. [read more](#). A visit to Espresso Yourself Coffee Cafe becomes even more rewarding due to the extensive range of **coffee and tea specialties**, The delicious sandwiches, small salads and other snacks can be planned well as a snack. We offer not only sweet pieces, cakes and simple snacks, but also **cold and hot drinks**, Inthemorning a *hearty brunch* is offered here.

# *Espresso Yourself Coffee Cafe Menu*



## *For the small hunger*

BAGEL

## *Fingerfood*

JALAPENO

## *Popular Items*

SMOOTHIES

## *Drinks*

DRINKS

## *Speciality Beverages*

COLD BREW

## *Shisha*

MINT

## *Restaurant Category*

GLUTEN FREE

## *These types of dishes are being served*

PANINI

## *Coffee*

ESPRESSO

CAPPUCCINO

COFFEE

## *Ingredients Used*

CHOCOLATE

BANANA

CHEESE

FETA

# *Espresso Yourself Coffee Cafe Menu*



## *Espresso Yourself Coffee Cafe*

5351 Devonshire Ave, 63109, St.  
Louis, US, United States

**Opening Hours:**  
Wednesday 07:00 -13:00  
Thursday 07:00 -13:00  
Friday 07:00 -13:00  
Saturday 08:00 -15:00  
Sunday 08:00 -15:00

Made with [menulist.menu](https://menulist.menu)

