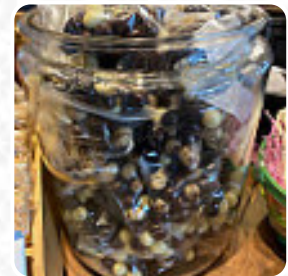
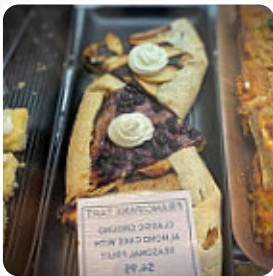




## *Thomas Hammer Coffee Roasters Menu*

<https://menulist.menu>

6630 E Sprague Ave A, 99212, Spokane Valley, US, United States  
(+1)5097037352 - <https://www.hammercoffee.com/>



On this webpage, you can find the *complete [menu](#)* of *Thomas Hammer Coffee Roasters* from Spokane Valley. Currently, there are 18 dishes and drinks up for grabs. For **seasonal or weekly deals**, please contact the owner of the restaurant directly. You can also contact them through their website. What [m](#) likes about Thomas Hammer Coffee Roasters:

I love this Thomas Hammer! Their store is always clean and it looks up to date with comfortable chairs and lots of wall plug ins if you are looking for a place to charge your phone or laptop. The coffee is good too! I recommend asking them to mix cold brew coffee with their PB&J blended drink! Although I've only tried the seven layer bar and a breakfast burrito for food, both were really good! [read more](#). In beautiful weather you can even have something in the outdoor area. What [User](#) doesn't like about Thomas Hammer Coffee Roasters: delicious coffee! the service was not great today. the barista didn't greet me when I came in and barely made an eye contact. when I thanked her for my drink, she just turned around and went away. Maybe she had a bad day, but don't expect a tipp with this service. [read more](#). The extensive range of coffee and tea specialties greatly enhances the value of a visit to Thomas Hammer Coffee Roasters, Here you'll find sweet pastries and cake, small snacks and chilled refreshments and hot beverages. In case you want to have breakfast, a tasty brunch is offered to you, You can also unwind at the bar with a **freshly tapped beer** or other alcoholic and non-alcoholic drinks.

# *Thomas Hammer Coffee Roasters Menu*



## *Non alcoholic drinks*

LEMON

## *Sandwiches & Hot Paninis*

BURRITO

## *Extras*

GINGER

## *Süßes*

MUFFINS

## *Dessert*

MATCHA

## *Spirits*

AMERICANO

## *Mexican dishes*

BURRITOS

## *Ice cream\**

VANILLA

## *Hot drinks*

TEA

## *Breakfast Combos*

BREAKFAST BURRITO

## *Coffee*

COFFEE

## *Drinks*

DRINKS

## *Speciality Beverages*

COLD BREW

## *Restaurant Category*

AMERICAN

*These types of dishes are  
being served*

BREAD

## *Ingredients Used*

PESTO

EGG

BACON

# *Thomas Hammer Coffee Roasters Menu*



## *Thomas Hammer Coffee Roasters*

6630 E Sprague Ave A, 99212,  
Spokane Valley, US, United  
States

**Opening Hours:**  
Wednesday 06:00-18:00  
Thursday 06:00-18:00  
Friday 06:00-18:00  
Saturday 07:00-18:00  
Sunday 07:00-18:00  
Monday 06:00-18:00  
Tuesday 06:00-18:00

Made with [menulist.menu](https://menulist.menu)

