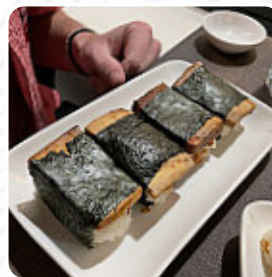




Quantum Leaf Menu

<https://menulist.menu>

1149 N State St (at Chestnut), Bellingham, Washington, USA, 98225, United States
(+1)3606840283 - <http://quantumleafbellingham.com>



Here you can find the menu of Quantum Leaf in Bellingham. At the moment, there are **26** meals and drinks on the menu. You can inquire about *changing offers* via phone. What [User](#) likes about Quantum Leaf: this place is fantastic. the menu has a lot of products that are vegan, gf and soy free, and allium free. we brought a big party here, and they had menu items to suit all our nutritional needs. The Poke shell is really amazing, along with the Hummus shell. we had different drinks, and all agree that the strawberry russian is our favorite. they also use local ingredients. woo hoo! I can't expect to come back and work... [read more](#). The rooms on site are wheelchair accessible and can also be used with a wheelchair or physiological disabilities. With a large selection of freshly harvested vegetables, fish and meat, the Quantum Leaf from Bellingham prepares healthy, flavorful Japanese meals, and you can enjoy here delicious American meals like Burger or Barbecue. The tasty **Sushi** such as **Maki** and **Sashimi** however, is the undisputed highlight of this restaurant, In addition, numerous guests look forward to enjoying traditional Vietnamese menus with the perfect hint of Southeast Asian flavor during a stop at the Quantum Leaf.

Quantum Leaf Menu



Alcoholic Drinks

BEER

Sushi Rolls

VEGGIE ROLL

Main courses

SUSHI

Extras

GINGER

Side Orders

MAYO

Dessert

MOCHI

Beer

GINGER BEER

Japanese specialties

MISO SOUP

Side Order

BROWN RICE

Slushes

LIME

Drinks

DRINKS

Biscuits and Cookies

CHEESECAKE

Shisha

MINT

Condiments and Sauces

HUMMUS

Plates Brunch

WAFFLE

Restaurant Category

VEGAN

*These types of dishes are
being served*

SOUP

Ingredients Used



CHOCOLATE

AVOCADO

TRAVEL

TOFU

MISO

STRAWBERRY

KIMCHI

COCONUT

WE HAVE

Quantum Leaf Menu



Quantum Leaf

1149 N State St (at Chestnut),
Bellingham, Washington, USA,
98225, United States

Opening Hours:
Friday 12:00-19:00
Saturday 12:00-19:00
Monday 12:00-19:00

Made with menulist.menu

