

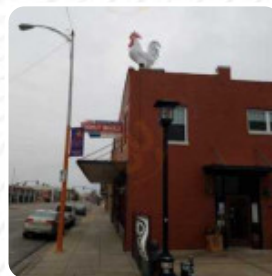


## ***The Donut Whole Menu***

<https://menulist.menu>

1720 E Douglas Ave, Wichita, KS 67214, USA, United States

+13162623700



The menu of The Donut Whole from Wichita includes 23 menus. On average, **menus or drinks on the menu** cost about \$9.3. The categories can be viewed on the menu below. The Donut Whole from Wichita is a cozy café, where you can enjoy a snack or cake with a *steaming coffee* or a *sweet chocolate*, Inthemorning a delicious brunch is offered here. Not to be overlooked is also the extensive selection of **coffee and tea specialties** in this locale, Particularly, the visitors love the fine juices.

# The Donut Whole Menu



## Dessert

### DONUTS

## Spirits

AMERICANO \$4.3

## Donuts

ASSORTED 1/2 DOZEN \$14.0

## Milchshakes

SMOOTHIE \$6.0

## Tea

BOBA MILK TEA \$6.0

## No Proof

MEXICAN COCA COLA \$3.0

## McCafé® Coffees

ICED COFFEE \$4.8

...

DRIP COFFEE \$3.3

## Handcrafted Sweets

GLUTEN-FREE 1/2 DOZEN \$15.0

## Ingredients Used

MILK \$3.0

## Soft drinks

APPLE JUICE \$2.6

ORANGE JUICE \$2.6

## Popular Items

DANDY DOZEN (VARIETY) \$21.0

GLUTEN-FREE DOZEN \$21.0

ASSORTED DOZEN (SUPREME FANCY BASIC) \$19.0

## Dozen Donuts Assorted

DANDY 1/2 DOZEN \$15.0

VEGAN DOZEN \$21.0

VEGAN 1/2 DOZEN \$15.0

## Coffee

CAPPUCCINO \$4.3

MOCHA \$4.7

CHAI LATTE \$6.0

# *The Donut Whole Menu*



LATTE

\$4.5

COFFEE

# *The Donut Whole Menu*



## *The Donut Whole*

1720 E Douglas Ave, Wichita, KS  
67214, USA, United States

### **Opening Hours:**

Monday 18:30 -13:00  
Tuesday 18:30 -19:00  
Wednesday 18:30 -19:00  
Thursday 18:30 -19:00  
Friday 18:30 -21:00  
Saturday 19:00 -21:00  
Sunday 19:30 -15:00

Made with [menulist.menu](https://menulist.menu)

