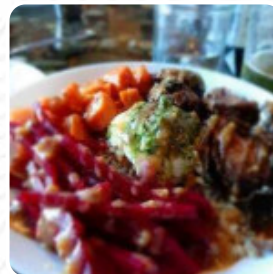




Spruce Menu

<https://menulist.menu>

128 E Front St, Port Angeles, Washington, USA, 98362, United States
(+1)3605042951 - <http://Spruceportangeles.com>



Here you can find the [menu](#) of **Spruce** in [Port Angeles](#). At the moment, there are 41 meals and drinks on the food list. You can inquire about [changing offers](#) via phone. What [User](#) likes about Spruce: wonderful vegan option. great atmosphere. great personal. cocktails are and their barkeepers are the best on the half island. the tofu kimchi sando is one of the best vegan sandwiches I ever had. [read more](#). The rooms on site are wheelchair accessible and can also be used with a wheelchair or physiological limitations. If you're hungry some hot South American gastronomy, you're in the right place: delicious dishes, made with *fish, sea creatures, and meat*, but also **corn, beans, and potatoes** are on the menu, The creative fusion of different meals with fresh and partially daring products is highly valued by the guests - a good example of Asian Fusion. There are also scrumptious American menus, for example, burgers and grilled meat, Naturally, you can't miss out on the fine burgers, which are accompanied by sides like fries, salads, or wedges served.

Spruce Menu



Salads

TACOS

Non alcoholic drinks

WATER

Starters & Salads

FRIES

Spirits

AMERICANO

Breaded Special Rolls

APPLES

Saucen, Chutneys & Extras

GRAVY

Hauptgerichte - Chicken

FRIED CHICKEN

Individual Items

BISCUIT

Wraps & Tacos

STREET TACOS

Drinks

DRINKS

Uncategorized

BLACK BEANS

Alcoholic Drinks

CHARDONNAY

BEER

Burgers

VEGGIE BURGER

IMPOSSIBLE BURGER

Sauces

AIOLI

BBQ SAUCE

Sandwiches

FRIED CHICKEN SANDWICH

GRILLED CHEESE SANDWICH

CHICKEN SANDWICH

Restaurant Category

VEGAN

VEGETARIAN

COCKTAIL

BBQ

These types of dishes are being served



PANINI

SANDWICH

BREAD

BURGER

Ingredients Used

PESTO

Spruce Menu



CHILI
ONIONS
BACON

CHEESE
PARMESAN
BEANS

CHICKEN
KIMCHI
BRUSSELS SPROUTS
QUINOA
TOFU
GARLIC

Spruce Menu



Spruce

128 E Front St, Port Angeles,
Washington, USA, 98362, United
States

Opening Hours:
Wednesday 16:00-21:00
Thursday 16:00-21:00
Friday 16:00-21:00
Saturday 16:00-21:00
Sunday 16:00-21:00

Made with menulist.menu

